

**MUTUAL RECOGNITION ARRANGEMENT ON CONFORMITY
ASSESSMENT OF ELECTRICAL AND ELECTRONIC EQUIPMENT**

**APEC EEMRA
Information Interchange Format**

PART 1

Introduction

This format is being prepared to assist member economies participating in the APEC MRA to prepare documentation required for participation in a consistent format.

It is expected that each participating member economy would submit their information in the recommended format to the APEC Secretariat as required by the MRA.

The format is based on the Information Notes on Good Practice for Technical Regulation and therefore provides for information to be supplied for each of the regulatory regimes identified in the notes. There are 7 regimes, they are for products requiring inspection, products requiring licensing, products requiring batch testing, products requiring approval (or certification), products requiring listing or registration, supplier declarations and essential safety requirements. Participating member economies need only provide information relating to the regimes which are in force in their economy. The regimes that are not enforced by the economy need to be noted also, please indicate this by placing 'none' in the standards table on the front of each regime.

Where more than one regulatory system applies within participating member economy information on each regulatory system should be provided separately.

The format also draws upon the survey on Conformity Assessment of Electrical and Electronic Equipment conducted by the APEC SCSC. The format includes reference to applicable international standards and uses the international convention for describing the relationship of national and international standards, i.e. IDT for identical, MOD for modified, and NEQ for not equal.

When information makes reference to documents or legislation, the documents or legislation should be available on a website for that economy or provided as part of the information supplied to the APEC Secretariat.

ECONOMY – Chinese Taipei

APEC EEMRA Information Interchange Format

Contact Points:

Mr. Chue-Wen Wu

Director of the 5th Division

Bureau of Standards, Metrology & Inspection

4 Chinan Road, Section 1, Taipei 100, Taiwan

E-mail: chuewen.wu@bsmi.gov.tw

Tel: (886 2) 2343 1787

Fax: (886 2) 2343 1804

Mr. Chun-Chao Wang

Director of the 3rd Division

Bureau of Standards, Metrology & Inspection

4 Chinan Road, Section 1, Taipei 100, Taiwan

E-mail: Chun.Wang@bsmi.gov.tw

Tel: (886 2) 2343 1777

Fax: (886 2) 3343 3991

PART I – INFORMATION EXCHANGE

Regime Overview

In Chinese Taipei, the basic and comprehensive law governing the inspection and certification is the Commodity Inspection Act. This law covers inspection procedures and penalty for violation for products to be imported or domestically manufactured.

The Bureau of Standards, Metrology and Inspection, Ministry of Economic Affairs has designated a list of commodities subject to mandatory inspection to ensure their conformity with technical standards prior to the importation and sale on the local market.

The inspection of electrical and electronic commodities is conducted based on four conformity assessment schemes, namely Batch-by-Batch Inspection (BBI), Type-Approved Batch Inspection (TABI), Registration of Product Certification (RPC), and Declaration of Conformity (DoC).

For 104 items of electrical products and 64 items of electronic products, manufacturers or importers may select either TABI or RPC schemes. For 106 items of electrical products and 79 items of electronic products, only the RPC scheme is applicable. For 37 items of information technology (IT) products, the DoC scheme is applicable. BBI scheme is applicable to 6 items of video game products. Regulations for commodity inspection and market surveillance are prescribed in the Commodity Inspection Act as well as other regulations and directions.

The inspection standards (CNS standards) of EE and IT products are harmonized with IEC (safety) and CISPR (EMC) international standards. In addition, energy efficiency testing is necessary for some products, such as refrigerators, air conditioners, dehumidifiers and electric pots. The minimum energy efficiency of these products must meet the requirements of the Bureau of Energy, Ministry of Economic Affairs.

Product labelling is mandatory. Imported products must have labels and instructions in Chinese, which shall not be simpler than the version in the original language.

Legislative References

Legislation Applicable	Scope of the Legislation	Government Agency
Commodity Inspection Act, 2007	Electrical Safety	Bureau of Standards, Metrology, and Inspection
	Electromagnetic Compatibility	

1. PRODUCTS REQUIRING INSPECTION

None

2. PRODUCTS REQUIRING LICENSING

None

3. PRODUCTS REQUIRING BATCH TESTING

Description of the Regime

Batch-by-batch inspection (BBI) applies to products with unstable manufacturing technology or those that pose concerns of risk or danger. In order for domestically manufactured or imported products to be placed on the market, manufacturers or importers must apply to the BSMI for inspection of the products before they are shipped or imported.

As for Type-approved Batch Inspection (TABI) scheme, manufacturers or importers shall have their products type-tested by the BSMI or BSMI-recognized testing laboratories, and then file an application for type approval with the BSMI or its branches.

After manufacturers or importers have obtained a type-approval certificate, they are still required to file an application for batch inspection with the BSMI each time before their products arrive at the port of entry. The BSMI will then perform inspection with simplified procedures. Additional samples may be required for further

testing if it is deemed necessary. The application fee for a type approval is NT\$3,500, and a type approval certificate is generally valid for three years.

The fees for type testing vary by products and depend on the fee schedule of the testing laboratories.

At present, TABI scheme is an alternative conformity assessment scheme for products subject to Registration of Product Certification (RPC) scheme. Products covered by TABI are the same as those listed under “4. PRODUCTS REQUIRING APPROVAL (OR CERTIFICATION)”, except 6 items of video game products which are limited to BBI scheme.

Testing Facilities

(1) The Bureau of Standards, Metrology and Inspection, Ministry of Economic Affairs

(2) The list of designated EMC labs and safety labs for TABI in Chinese Taipei can be found on the BSMI website.

<https://www.bsmi.gov.tw/wSite/lp?ctNode=8930&CtUnit=3384&BaseDSD=7&mp=1>

(3) The list of designated EMC labs and safety labs for TABI overseas can be found on the Overview webpage of the BSMI website.

<https://www.bsmi.gov.tw/wSite/lp?ctNode=9452&CtUnit=667&BaseDSD=7&mp=2>

Approval (Certification) Agencies

The Bureau of Standards, Metrology and Inspection, Ministry of Economic Affairs

Batch Testing Agencies

The Bureau of Standards, Metrology, and Inspection, Ministry of Economic Affairs

Labeling Requirements

The Commodity Inspection Mark printed and issued by the BSMI shall be affixed to the products subject to BBI scheme after they pass the inspection.

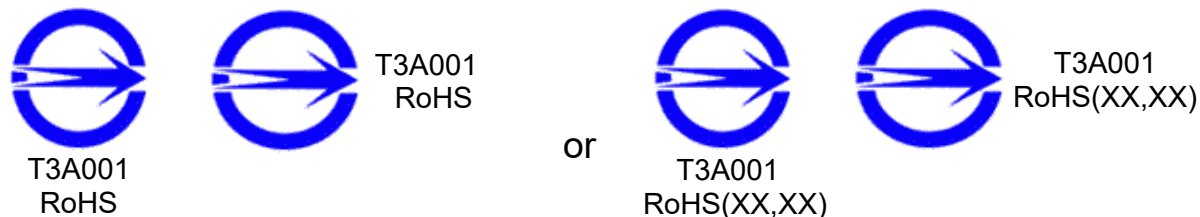
Example:



As for TABI scheme, the Commodity Inspection Mark with the Roman letter 'T' followed by a 5-digits designated code given by the BSMI are allowed to be used after the products pass inspection.

As for commodities subject to marking requirements stipulated in CNS 15663, Section 5 “Marking of presence,” labeling of the presence conditions of the restricted substance, in the form of “(RoHS or RoHS(XX,XX)),” is required.

Examples of the Commodity Inspection Mark for TABI Scheme are shown as follows:



“RoHS”: indicating that “the content of restricted substance(s) other than exemption” of the commodities does not exceed the reference percentage value of presence condition.

“RoHS(XX,XX)”: indicating that “the content of restricted substance(s) (element XX, element XX, ...) other than exemption” of the commodities exceeds the reference percentage value of presence condition.

The restricted substances: Pb, Cd, Hg, Cr+6, PBB, PBDE.

Examples:

RoHS(Pb): indicating that the Pb percentage content in certain parts of the commodity exceeds the reference percentage value of presence condition.

RoHS(Cd,Cr+6,PBB): indicating that the Cd, Cr+6, and PBB percentage content in certain parts of the commodity exceed the reference percentage value of presence condition respectively.

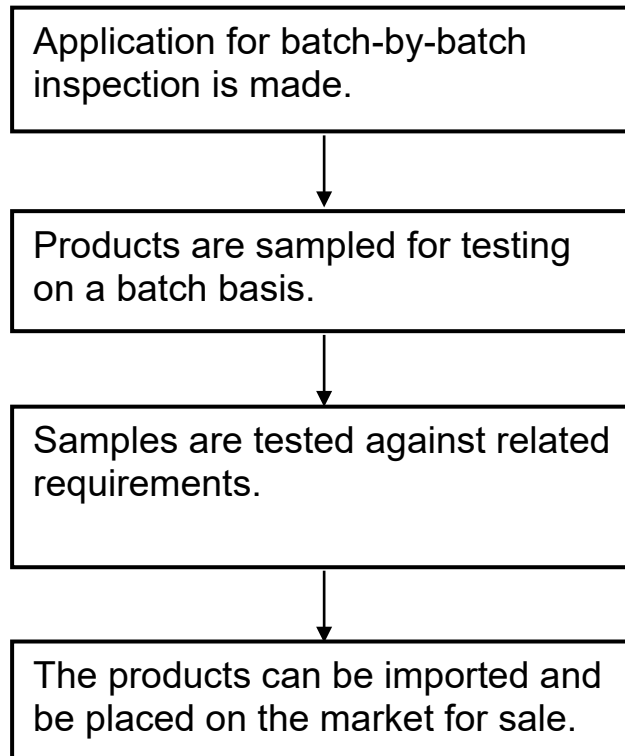
Regulatory and Legislation Requirements

Commodity Inspection Act, 2007

Regulations Governing Recognition of Designated Testing Laboratory for Commodity Inspection, 2008

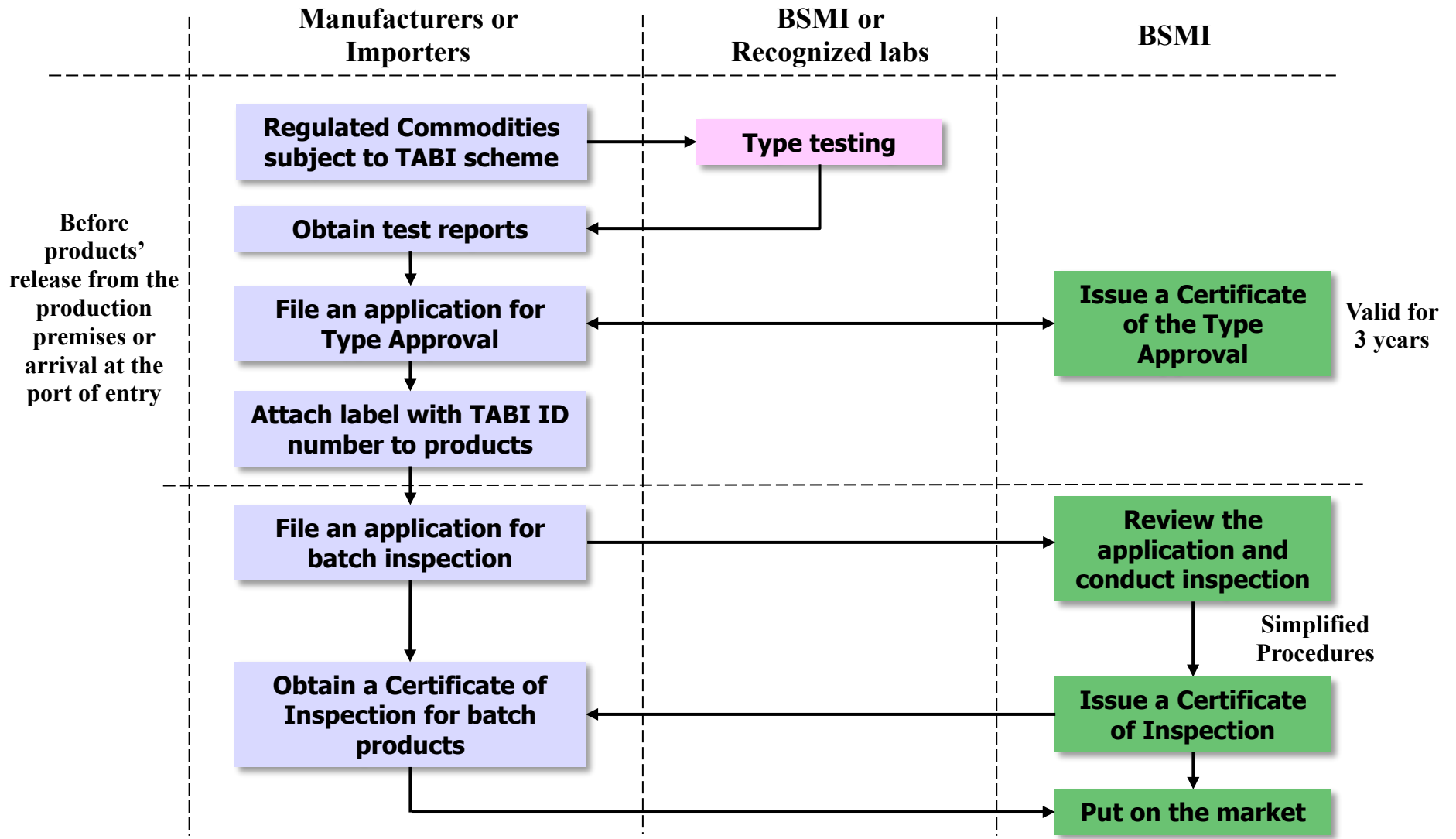
Diagrammatic representation or flowchart of the regime

Batch-by-batch Inspection (BBI)



Diagrammatic representation or flowchart of the regime

Type-Approval Batch Inspection (TABI)



4. PRODUCTS REQUIRING APPROVAL (OR CERTIFICATION)

Description of the Regime

Under Registration of Product Certification (RPC) scheme, manufacturers/importers must have their products type-tested in advance (Module II) by the BSMI, designated testing laboratories (local or overseas) or testing laboratories recognised under MRA before applying for registration of their products. Manufacturers or importers will also be required to ensure by declaring (Module III) that all products whether made at their manufacturing facilities or imported are in conformity with the prototypes submitted for type test at Module II stage.

In addition, the quality management systems of the production premises must be in conformity with Module IV (full quality assurance), Module V (production quality assurance) or Module VII (factory inspection). For Module IV and Module V, it is required to get certification in accordance with the CNS 12680 (ISO 9000) series of standards. As for Module VII, it is required to obtain a factory inspection report issued by the BSMI or BSMI-recognized factory inspection bodies. A declaration of conformity is also required to ensure that the quality of the mass-produced commodities is in conformity with that shown in the type-test report.

Products will be allowed to use the Commodity Inspection Mark with the letter 'R' and the identification number given by the BSMI, after they are certified and registered with the BSMI. These products can then pass through customs directly without any further inspection if they are not sampled by RPC border check procedure. The application fee and annual fee for RPC are both NTD \$5,000 (about USD \$170) for each certification, and the RPC certifications are valid for three years. If there are any serial products, an extra NTD \$3,000 (about USD \$102) of application fee is needed for every application in each certification.

The fees for type testing vary by products and depend on the fee schedule of the testing laboratories.

Currently, there are 106 items of electrical products and 79 items of electronics products subject to RPC scheme. In addition, except 2 items of electrical products (e.g., single-phase AC motors, low voltage three-phase induction motors) and 15 items of electronics products (e.g., battery chargers, etc.), which are

only subject to RPC scheme, 104 items of electrical products and 64 items of electronics products could follow the procedures of TABI scheme as an alternative.

Testing Facilities

Testing laboratories that meet relevant requirements may apply to the BSMI for recognition and they will be called the "designated testing laboratories" after recognition is granted. The BSMI recognizes testing laboratories according to the "Regulations Governing Recognition of Designated Testing Laboratory for Commodity Inspection." The BSMI accepts applications from domestic and foreign testing laboratories for recognition in the electromagnetic compatibility (EMC) testing. An MRA is required for BSMI to recognize foreign safety testing laboratories.

Currently, there are 44 designated EMC labs and 71 designated safety labs in Chinese Taipei. In addition, there are 97 recognized overseas EMC testing laboratories in total, including 79 EMC labs in the US and Canada, 2 EMC labs in Singapore, 14 EMC labs in Japan and 2 EMC labs in Australia. As for safety testing, there are 3 recognized overseas safety testing labs, 1 in Singapore and 2 in Japan.

The list of designated EMC labs and safety labs in Chinese Taipei can be found on the BSMI website.

<https://www.bsmi.gov.tw/wSite/lp?ctNode=8930&CtUnit=3384&BaseDSD=7&mp=1>

The list of designated EMC labs and safety labs overseas can be found on the Overview webpage of the BSMI website.

<https://www.bsmi.gov.tw/wSite/lp?ctNode=9452&CtUnit=667&BaseDSD=7&mp=2>

Certification bodies

Domestic certification bodies applying for recognition by the BSMI shall demonstrate in compliance with the BSMI requirements and be accredited by the Taiwan Accreditation Foundation (TAF). The applicant applying for recognition shall be administrative agencies, colleges/universities, or non-profit juristic persons. The BSMI recognizes certification bodies according to the “Regulations Governing Commission of Commodity Inspection Operations.”

Currently, there are 4 recognized certification bodies in Chinese Taipei for certain EE products, such as audio and video products, air conditioners, electrical tools and fluorescent lamps.

Designating Authority

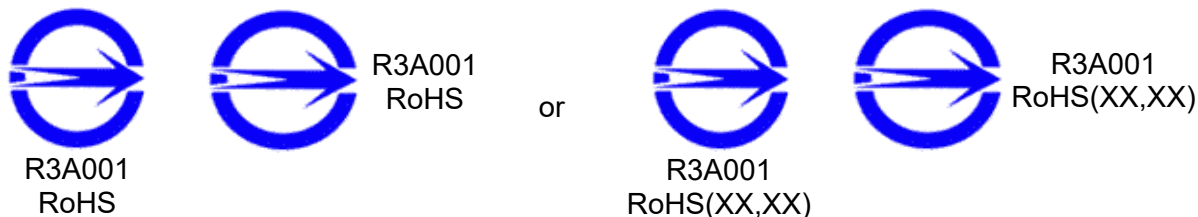
The Bureau of Standards, Metrology, and Inspection, the Ministry of Economic Affairs

Labelling Requirements

The Commodity Inspection Mark with the Roman letter 'R' followed by a 5-digits designated code given by the BSMI is allowed to be used after the products pass inspection.

As for commodities subject to marking requirements stipulated in CNS 15663, Section 5 “Marking of presence” under the RPC Scheme, labeling of the presence conditions of the restricted substance, in the form of “RoHS or RoHS(XX,XX),” is required.

Examples of the Commodity Inspection Mark for RPC Scheme are shown as follows:



“RoHS”: indicating that “the content of restricted substance(s) other than exemption” of the commodities does not exceed the reference percentage value of presence condition.

“RoHS(XX,XX)”: indicating that “the content of restricted substance(s) (element XX, element XX, ...) other than exemption” of the commodities exceeds the reference percentage value of presence condition.

The restricted substances: Pb, Cd, Hg, Cr+6, PBB, PBDE.

Examples:

- RoHS(Pb): indicating that the Pb percentage content in certain parts of the commodity exceeds the reference percentage value of presence condition.
- RoHS(Cd,Cr+6,PBB): indicating that the Cd, Cr+6, and PBB percentage content in certain parts of the commodity exceed the reference percentage value of presence condition respectively.

Regulatory and Legislation Requirements

Commodity Inspection Act, 2007

Regulations Governing Commission of Commodity Inspection Operations, 2013

Regulations Governing Recognition of Designated Testing Laboratory for Commodity Inspection, 2008

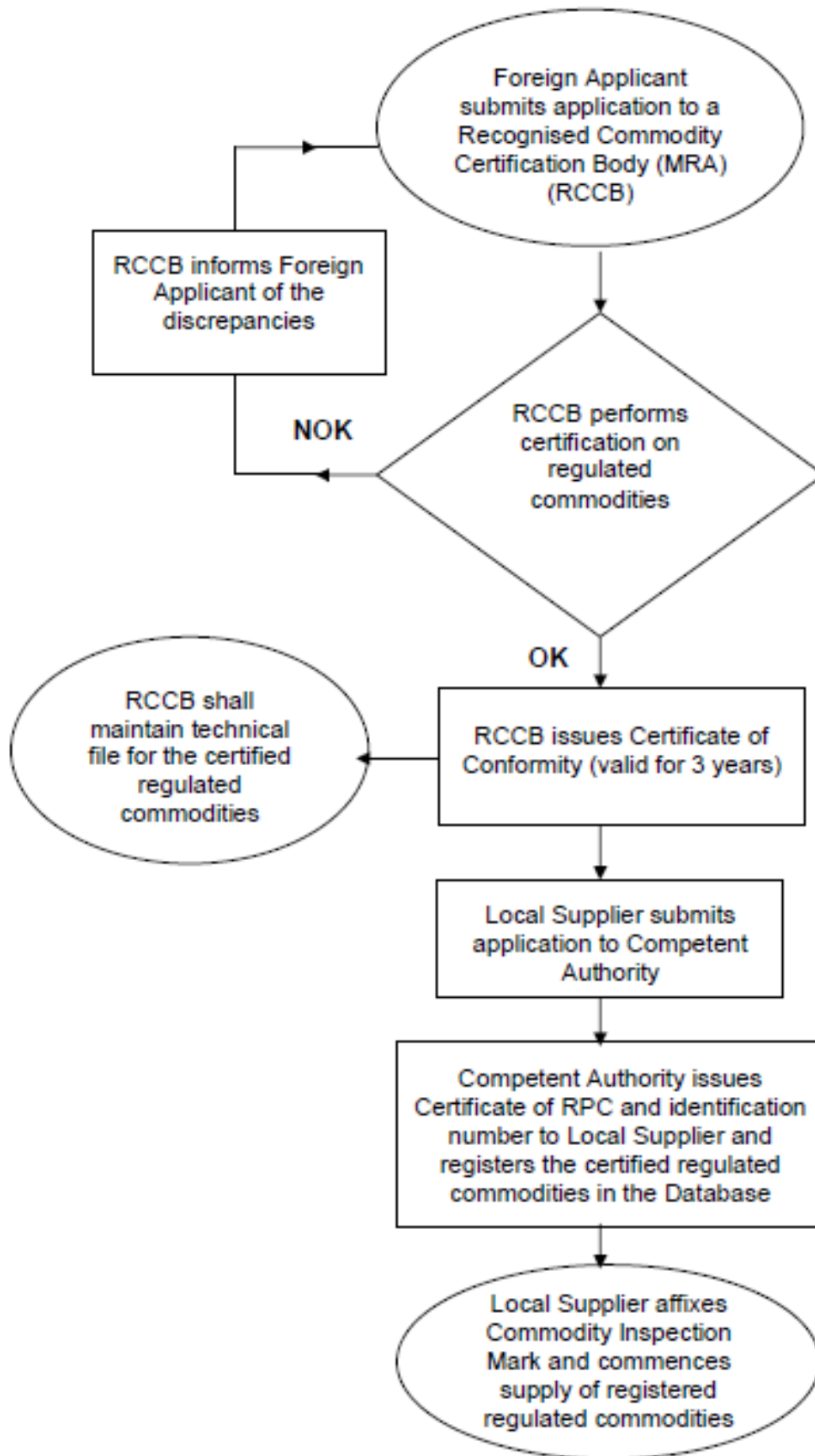
Regulations Governing Registration of Product Certification

Directions for recognition of Quality Management Systems Certification Bodies

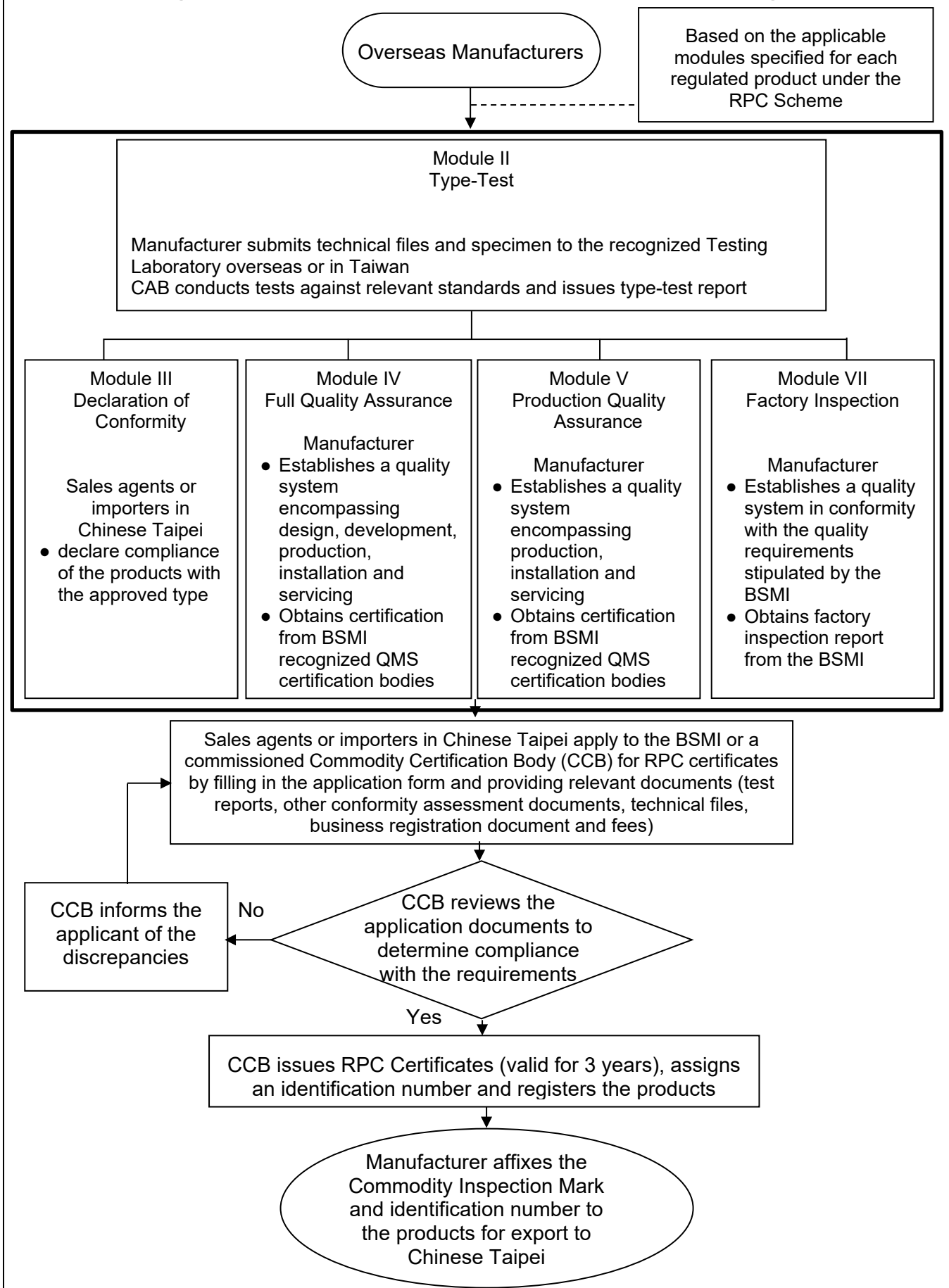
Directions Governing Factory Inspection under Registration of Product Certification

Directions Governing Recognition of Factory Inspection Bodies

Diagrammatic representation or flowchart of the regime



Diagrammatic representation or flowchart of the regime



5. PRODUCTS REQUIRING LISTING OR REGISTRATION

None

6. SUPPLIER DECLARATIONS

Description of the Regime

Commodities subject to the Declaration of Conformity (DoC) scheme are required to be tested by the BSMI, designated testing laboratories (local or overseas) or testing laboratories recognised under MRA. Once the commodities are tested and shown to be in compliance with the inspection standards, manufacturers/importers shall sign a Declaration of Conformity and maintain test reports or relevant technical documents of the commodities for a period as determined and made known to the public by BSMI per public notice.

Manufacturers/importers shall apply to be registered to acquire the identification number. Upon receipt of the application, the BSMI will give an identification number with the Roman letter 'D' followed by a 5-digits designated code to the applicants. Accordingly, the manufacturers/importers can then affix the Commodity Inspection Mark with the identification numbers on the regulated commodities and place the commodities on the market.

Currently, there are **37** electronics/IT products (classified by C.C.C. Code) subject to the DoC scheme.

Testing Facilities

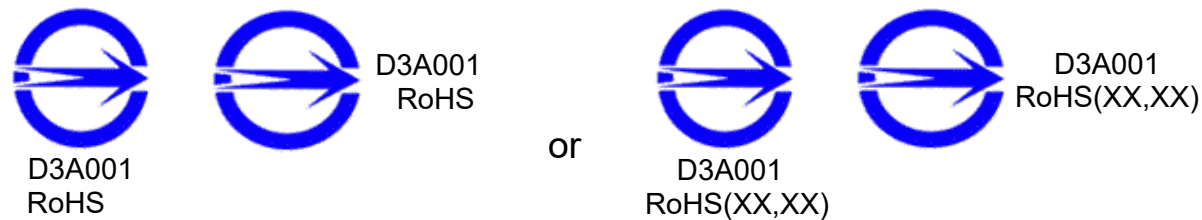
The same as the testing facilities listed under item 4.

Labelling Requirements

The Commodity Inspection Mark with the Roman letter 'D' followed by a 5-digits designated code given by the

BSMI is allowed to be used after the conformity assessment procedures have been completed. As for commodities subject to marking requirements stipulated in CNS 15663, Section 5 “Marking of presence” under the DoC Scheme, labeling of the presence conditions of the restricted substance, in the form of “RoHS or RoHS(XX,XX),” is required.

Examples of the Commodity Inspection Mark for DoC Scheme are shown as follows:



“RoHS”: indicating that “the content of restricted substance(s) other than exemption” of the commodities does not exceed the reference percentage value of presence condition.

“RoHS(XX,XX)”: indicating that “the content of restricted substance(s) (element XX, element XX, ...) other than exemption” of the commodities exceeds the reference percentage value of presence condition.

The restricted substances: Pb, Cd, Hg, Cr+6, PBB, PBDE.

Examples:

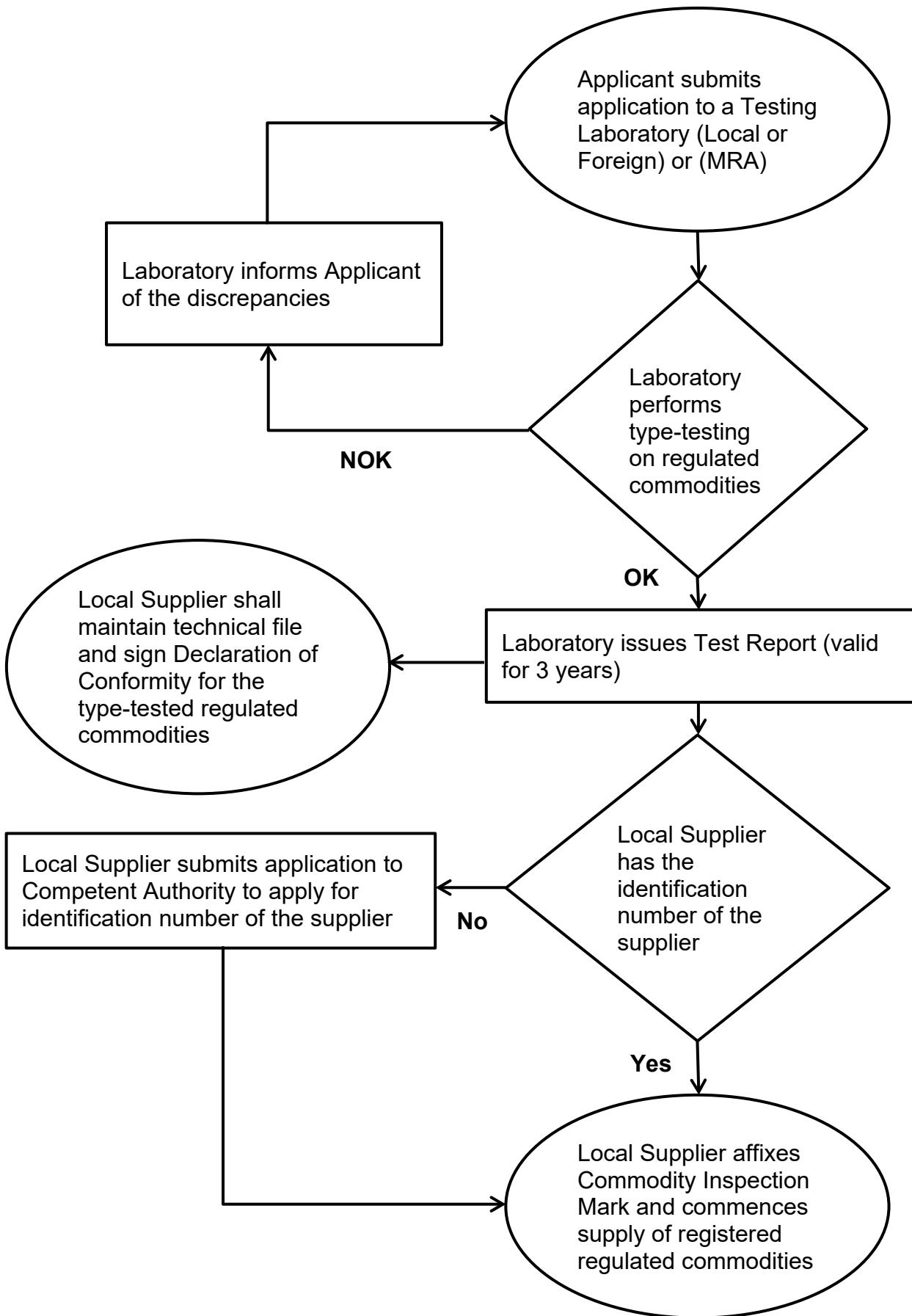
- RoHS(Pb): indicating that the Pb percentage content in certain parts of the commodity exceeds the reference percentage value of presence condition.
- RoHS(Cd,Cr+6,PBB): indicating that the Cd, Cr+6, and PBB percentage content in certain parts of the commodity exceed the reference percentage value of presence condition respectively.

Regulatory and Legislation Requirements

Commodity Inspection Act, 2007

Regulations Governing Recognition of Designated Testing Laboratory for Commodity Inspection, 2008

Diagrammatic representation or flowchart of the regime



7. ESSENTIAL SAFETY REQUIREMENTS

None

8. SUMMARY OF UPDATE

(1) Contact Points

Updates are highlighted on Page 3.

(2) Regime Overview

The total number of regulated EE products is updated, as highlighted on Page 4.

7. PRODUCTS REQUIRING BATCH TESTING □ PRODUCTS REQUIRING APPROVAL (OR CERTIFICATION) □

SUPPLIER DECLARATIONS

● Testing Facilities

The number of recognized conformity assessment bodies is updated, as highlighted on Page 6 and Page 12.

(3) Products covered by the above inspection schemes

Regulated products and inspection standards are updated.

Products covered by the above inspection schemes

1. Products covered by batch testing (BBI scheme)

Product	Regulations	Standards			
		Domestic Standards	Please tick box if mandatory	Relevant International Standards	Extent of Alignment
Articles for funfair, table or parlour games, operated by coins, banknotes, bank card, token or other type of payment, other than automatic bowling alley equipment	Commodity Inspection Act	CNS 12473 CNS 14465	√	Nil Nil	NEQ NEQ
Other games, operated by coins, banknotes, bank card, token or other type of payment, other than automatic bowling alley equipment	ditto	CNS12743 CNS 14465	√	Nil Nil	NEQ NEQ
Video games of a kind used with a television receiver, without software	ditto	CNS 12473 CNS 12473	√	Nil Nil	NEQ NEQ
Other video games of a kind used with a television receiver	ditto	CNS 12473 CNS 14465	√	Nil Nil	NEQ NEQ
Other video game consoles and machines, other than those of subheading 950430	ditto	CNS 12473 CNS 14465	√	Nil Nil	NEQ NEQ
Other articles for funfair, table or parlour games (inspection scope: other than motor vehicles designed to be ridden by children, toy, pedal or machine operated)	ditto	CNS 12473 CNS 14465	√	Nil Nil	NEQ NEQ

2. Products covered by approval or certification (RPC/TABI Scheme)

2.1. Electrical products

Product	Regulations	Standards			
		Domestic Standards	Please tick box if mandatory	Relevant International Standards	Extent of Alignment
Electric Blankets (inspection scope: rated voltage not exceeding 250V, exclusive of those for animal use or medical devices specified by the Pharmaceutical Affairs Act) ¹	Commodity Inspection Act	CNS 60335-1 (2014)	√	IEC 60335-1 (2013)	MOD
		CNS 60335-2-81 (2015) or CNS 60335-2-17 (2015) or CNS 60335-2-23 (2015)		IEC 60335-2-81 (2012) IEC 60335-2-17 (2012) IEC 60335-2-23 (2012)	MOD
		CNS 13783-1 (2013)		CISPR 14-1 (2011)	MOD
		CNS 15663 (2013) Section 5 " Marking of Presence"		Nil	NEQ
Electro-thermic warmers for personal use (inspection scope: rated voltage not exceeding 250V, exclusive of those medical devices specified by the Pharmaceutical Affairs Act) ¹	ditto	CNS 60335-1 (2014)	√	IEC 60335-1 (2013)	MOD
		CNS 60335-2-81 (2015) or CNS 60335-2-17 (2015) or CNS 60335-2-23 (2015)		IEC 60335-2-81 (2012) IEC 60335-2-17 (2012) IEC 60335-2-23 (2012)	MOD
		CNS 13783-1 (2013)		CISPR 14-1 (2011)	MOD
		CNS 15663 (2013) Section 5 " Marking of Presence"		Nil	NEQ
Electric mattresses (inspection scope: rated voltage not exceeding 250V, exclusive of those for animal	ditto	CNS 60335-1 (2014)	√	IEC 60335-1 (2013)	MOD
		CNS 60335-2-81 (2015) or CNS 60335-2-17 (2015) or CNS 60335-2-23 (2015)		IEC 60335-2-81 (2012) IEC 60335-2-17 (2012) IEC 60335-2-23 (2012)	MOD

Product	Regulations	Standards			
		Domestic Standards	Please tick box if mandatory	Relevant International Standards	Extent of Alignment
use or medical devices specified by the Pharmaceutical Affairs Act) ¹		CNS 13783-1 (2013)		CISPR 14-1 (2011)	MOD
		CNS 15663 (2013) Section 5 “ Marking of Presence”		Nil	NEQ
Fans (inspection scope: rated voltage not exceeding 250V and rated power consumption not exceeding 500W(if without the electro-thermal devices), including those interconnectable multiple-fan system using with a controller, exclusive of those incorporated in other appliances) ¹	ditto	CNS 60335-1 (2014)	√	IEC 60335-1 (2013)	MOD
		CNS 60335-2-80 (2015)		IEC 60335-2-80 (2008)	MOD
		CNS 13783-1 (2013)		CISPR 14-1 (2011)	MOD
		CNS 15663 (2013) Section 5 “ Marking of Presence”		Nil	NEQ
Hand dryers (inspection scope: rated voltage not exceeding 250V) ¹	ditto	CNS 60335-1 (2014)	√	IEC 60335-1 (2013)	MOD
		CNS 60335-2-23 (2015)		IEC 60335-2-23 (2012)	MOD
		CNS 13783-1 (2013)		CISPR 14-1 (2011)	MOD
		CNS 15663 (2013) Section 5 “ Marking of Presence”		Nil	NEQ
Ventilators/ Exhaust hoods	ditto	CNS 60335-1 (2014)	√	IEC 60335-1 (2013)	MOD

Product	Regulations	Standards			
		Domestic Standards	Please tick box if mandatory	Relevant International Standards	Extent of Alignment
(inspection scope: rated voltage not exceeding 250V) ¹		CNS 60335-2-31 (2015)		IEC 60335-2-31 (2012)	MOD
		CNS 13783-1 (2013)		CISPR 14-1 (2011)	MOD
		CNS 3805(1989) Section 3.7		Nil	NEQ
		CNS 15663 (2013) Section 5 “ Marking of Presence”		Nil	NEQ
Electric refrigerators and freezers (inspection scope: rated voltage not exceeding 250V and rated storage volume 700L) ¹	ditto	CNS 60335-1 (2014)	√	IEC 60335-1 (2013)	MOD
		CNS 60335-2-24 (2016)		IEC 60335-2-24 (2012)	MOD
		CNS 2062 (2000) Section 5.2, 5.3, 5.10 and 7		Nil	NEQ
		CNS 13783-1 (2013)		CISPR 14-1 (2011)	MOD
		CNS 15663 (2013) Section 5 “ Marking of Presence”		Nil	NEQ
Electric absorption-type refrigerators (inspection scope: rated voltage not exceeding 250V and rated storage volume not exceeding	ditto	CNS 60335-1 (2014)	√	IEC 60335-1 (2013)	MOD
		CNS 60335-2-24 (2016)		IEC 60335-2-24 (2012)	MOD
		CNS 13783-1 (2013)		CISPR 14-1 (2011)	MOD

Product	Regulations	Standards			
		Domestic Standards	Please tick box if mandatory	Relevant International Standards	Extent of Alignment
700L) ¹		CNS 15663 (2013) Section 5 “ Marking of Presence”		Nil	NEQ
Upright freezers (inspection scope: rated voltage not exceeding 250V and rated storage volume not exceeding 400L) ¹	ditto	CNS 60335-1 (2014)	√	IEC 60335-1 (2013)	MOD
		CNS 60335-2-24 (2016)		IEC 60335-2-24 (2012)	MOD
		CNS 2062 (2000) Section 5.2, 5.3, 5.10 and 7		Nil	NEQ
		CNS 13783-1 (2013)		CISPR 14-1 (2011)	MOD
		CNS 15663 (2013) Section 5 “ Marking of Presence”		Nil	NEQ
Refrigerating cooler box Refrigerating cooler box (inspection scope: rated voltage not exceeding 250V and rated storage volume not exceeding 100L) ¹	ditto	CNS 60335-1 (2014)	√	IEC 60335-1 (2013)	MOD
		CNS 60335-2-24 (2016)		IEC 60335-2-24 (2012)	MOD
		CNS 13783-1 (2013)		CISPR 14-1 (2011)	MOD
		CNS 15663 (2013) Section 5 “ Marking of Presence”		Nil	NEQ
Electric coffee machines/ makers (inspection scope: rated voltage not exceeding 250V and rated power consumption not exceeding	ditto	CNS 60335-1 (2014)	√	IEC 60335-1 (2013)	MOD
		CNS 60335-2-15 (2014) or CNS 60335-2-14 (2015) (if equipped with grinding function)		IEC 60335-2-15 (2012) IEC 60335-2-14 (2012)	MOD

Product	Regulations	Standards			
		Domestic Standards	Please tick box if mandatory	Relevant International Standards	Extent of Alignment
1650W) ¹		CNS 13783-1 (2013) or CNS 13803 (2003)		CISPR 14-1 (2011) CISPR 11 (1997)	MOD
		CNS 15663 (2013) Section 5 “ Marking of Presence”		Nil	NEQ
Cloth spin whizzer (inspection scope: rated voltage not exceeding 250V) ¹	ditto	CNS 60335-1 (2014)	√	IEC 60335-1 (2013)	MOD
		CNS 60335-2-4 (2015)		IEC 60335-2-4 (2012)	MOD
		CNS 13783-1 (2013)		CISPR 14-1 (2011)	MOD
		CNS 15663 (2013) Section 5 “ Marking of Presence”		Nil	NEQ
Electric air purifiers (inspection scope: only those using with a filter net, electrostatic precipitator, negative ionizer, ozone generator, ultra-violet light or photo-catalyst as purifying methods and rated voltage not exceeding 250V, exclusive of those mounted in ducts or using air exchanging system with outdoor air convection or medical devices specified by the Pharmaceutical Affairs Act) ¹	ditto	CNS 60335-1 (2014)	√	IEC 60335-1 (2013)	MOD
		CNS 60335-2-65 (2015)		IEC 60335-2-65 (2015)	MOD
		CNS 13783-1 (2013)		CISPR 14-1 (2011)	MOD
		CNS 15663 (2013) Section 5 “ Marking of Presence”		Nil	NEQ

Product	Regulations	Standards			
		Domestic Standards	Please tick box if mandatory	Relevant International Standards	Extent of Alignment
Household dish washers (inspection scope: rated voltage not exceeding 250V and rated power consumption not exceeding 1650W) ¹	ditto	CNS 60335-1 (2014)	√	IEC 60335-1 (2013)	MOD
		CNS 60335-2-5 (2015)		IEC 60335-2-5 (2012)	MOD
		CNS 13783-1 (2013)		CISPR 14-1 (2011)	MOD
		CNS 15663 (2013) Section 5 “ Marking of Presence”		Nil	NEQ
Washing machines (inspection scope: rated voltage not exceeding 250V) ¹	ditto	CNS 60335-1 (2014)	√	IEC 60335-1 (2013)	MOD
		CNS 60335-2-7 (2014)		IEC 60335-2-7 (2012)	MOD
		CNS 13783-1 (2013)		CISPR 14-1 (2011)	MOD
		CNS 15663 (2013) Section 5 “ Marking of Presence”		Nil	NEQ
Clothes dryers (inspection scope: rated voltage not exceeding 250V) ¹	ditto	CNS 60335-1 (2014)	√	IEC 60335-1 (2013)	MOD
		CNS 60335-2-11 (2014) or CNS 60335-2-43 (2015)		IEC 60335-2-11 (2012) IEC 60335-2-43 (2008)	MOD
		CNS 13783-1 (2013)		CISPR 14-1 (2011)	MOD
		CNS 15663 (2013) Section 5 “ Marking of Presence”		Nil	NEQ
Cooling fans (inspection scope: rated voltage not exceeding single-phase 250V AC and rated power consumption not exceeding	ditto	CNS 60335-1 (2014)	√	IEC 60335-1 (2013)	MOD
		CNS 60335-2-80 (2015)		IEC 60335-2-80 (2008)	MOD
		CNS 13783-1 (2013)		CISPR 14-1 (2011)	MOD

Product	Regulations	Standards			
		Domestic Standards	Please tick box if mandatory	Relevant International Standards	Extent of Alignment
500W(if without electro-thermal devices), including those not intended for normal household use and with electro-thermal devices) ¹		CNS 15663 (2013) Section 5 “ Marking of Presence”		Nil	NEQ
Dehumidifiers (inspection scope: only those with compressors, rated voltage not exceeding 250V and rated power consumption not exceeding 1000W) ¹	ditto	CNS 60335-1 (2014)	√	IEC 60335-1 (2013)	MOD
		CNS 60335-2-40 (2015)		IEC 60335-2-40 (2013)	MOD
		CNS 12492 (2010)		Nil	NEQ
		CNS 13783-1 (2013)		CISPR 14-1 (2011)	MOD
		CNS 15663 (2013) Section 5 “ Marking of Presence”		Nil	NEQ
Vacuum cleaners & Water-suction cleaners (inspection scope: rated voltage not exceeding 250V, exclusive of those for animal use) ¹	ditto	CNS 60335-1 (2014)	√	IEC 60335-1 (2013)	MOD
		CNS 60335-2-2 (2015)		IEC 60335-2-2 (2012)	MOD
		CNS 13783-1 (2013)		CISPR 14-1 (2011)	MOD
		CNS 15663 (2013) Section 5 “ Marking of Presence”		Nil	NEQ
Electric food grinders (inspection scope: vegetable slicers, bean slicers, cheese graters, vegetable graters, vegetable shredders and grain grinders(hopper capacity not exceeding 3L), rated voltage not exceeding 250V) ¹	ditto	CNS 60335-1 (2014)	√	IEC 60335-1 (2013)	MOD
		CNS 60335-2-14 (2015)		IEC 60335-2-14 (2012)	MOD
		CNS 13783-1 (2013)		CISPR 14-1 (2011)	MOD
		CNS 15663 (2013) Section 5 “ Marking of Presence”		Nil	NEQ

Product	Regulations	Standards			
		Domestic Standards	Please tick box if mandatory	Relevant International Standards	Extent of Alignment
Electric food mixers (inspection scope: food blenders, juicers, cream whippers, egg beaters, food mixers, food processors, and mincers, rated voltage not exceeding 250V) ¹	ditto	CNS 60335-1 (2014)	√	IEC 60335-1 (2013)	MOD
		CNS 60335-2-14 (2015)		IEC 60335-2-14 (2012)	MOD
		CNS 13783-1 (2013)		CISPR 14-1 (2011)	MOD
		CNS 15663 (2013) Section 5 “ Marking of Presence”		Nil	NEQ
Electric juice extractors/ fruit squeezers (inspection scope: rated voltage not exceeding 250V) ¹	ditto	CNS 60335-1 (2014)	√	IEC 60335-1 (2013)	MOD
		CNS 60335-2-14 (2015)		IEC 60335-2-14 (2012)	MOD
		CNS 13783-1 (2013)		CISPR 14-1 (2011)	MOD
		CNS 15663 (2013) Section 5 “ Marking of Presence”		Nil	NEQ
Coffee mills/ Coffee bean grinders (inspection scope: rated voltage not exceeding 250V and hopper capacity not exceeding 500g) ¹	ditto	CNS 60335-1 (2014)	√	IEC 60335-1 (2013)	MOD
		CNS 60335-2-14 (2015)		IEC 60335-2-14 (2012)	MOD
		CNS 13783-1 (2013)		CISPR 14-1 (2011)	MOD
		CNS 15663 (2013) Section 5 “ Marking of Presence”		Nil	NEQ
Electric ice shaving machine/ ice flaker (inspection scope: rated voltage not exceeding 250V) ¹	ditto	CNS 60335-1 (2014)	√	IEC 60335-1 (2013)	MOD
		CNS 60335-2-14 (2015)		IEC 60335-2-14 (2012)	MOD
		CNS 13783-1 (2013)		CISPR 14-1 (2011)	MOD

Product	Regulations	Standards			
		Domestic Standards	Please tick box if mandatory	Relevant International Standards	Extent of Alignment
		CNS 15663 (2013) Section 5 “ Marking of Presence”		Nil	NEQ
Electric floor buffers, polishers, and waxers (inspection scope: rated voltage not exceeding 250V) ¹	ditto	CNS 60335-1 (2014)	√	IEC 60335-1 (2013)	MOD
		CNS 60335-2-10 (2015)		IEC 60335-2-10 (2008)	MOD
		CNS 13783-1 (2013)		CISPR 14-1 (2011)	MOD
		CNS 15663 (2013) Section 5 “ Marking of Presence”		Nil	NEQ
Electric insect killers (inspection scope: rated voltage not exceeding 250V) ¹	ditto	CNS 60335-1 (2014)	√	IEC 60335-1 (2013)	MOD
		CNS 60335-2-59 (2015)		IEC 60335-2-59 (2009)	MOD
		CNS 13783-1 (2013)		CISPR 14-1 (2011)	MOD
		CNS 15663 (2013) Section 5 “ Marking of Presence”		Nil	NEQ
Electric shavers (inspection scope: rated voltage not exceeding 250V) ¹	ditto	CNS 60335-1 (2014)	√	IEC 60335-1 (2013)	MOD
		CNS 60335-2-8 (2015)		IEC 60335-2-8 (2012)	MOD
		CNS 13783-1 (2013)		CISPR 14-1 (2011)	MOD
		CNS 15663 (2013) Section 5 “ Marking of Presence”		Nil	NEQ
Electric hair clippers	ditto	CNS 60335-1 (2014)	√	IEC 60335-1 (2013)	MOD

Product	Regulations	Standards			
		Domestic Standards	Please tick box if mandatory	Relevant International Standards	Extent of Alignment
(inspection scope: rated voltage not exceeding 250V, exclusive of those for animal use) ¹		CNS 60335-2-8 (2015)		IEC 60335-2-8 (2012)	MOD
		CNS 13783-1 (2013)		CISPR 14-1 (2011)	MOD
		CNS 15663 (2013) Section 5 “ Marking of Presence”		Nil	NEQ
Electric instantaneous water heaters (inspection scope: rated voltage not exceeding 250V) ¹	ditto	CNS 60335-1 (2014)	√	IEC 60335-1 (2013)	MOD
		CNS 60335-2-35 (2016)		IEC 60335-2-35 (2012)	MOD
		CNS 13783-1 (2013) or CNS 13803 (2003)		CISPR 14-1 (2011) CISPR 11 (1997)	MOD
		CNS 15663 (2013) Section 5 “ Marking of Presence”		Nil	NEQ
Electric storage tank boiling water heaters (inspection scope: rated voltage not exceeding 250V and capacity not exceeding 500L) ¹	ditto	CNS 60335-1 (2014)	√	IEC 60335-1 (2013)	MOD
		CNS 60335-2-15 (2014)		IEC 60335-2-15 (2012)	MOD
		CNS 12623 (2014) Section 10.7 “ Capacity of inner tank test” & 10.8 “ Standardized standby loss of every 24 hours Est,24 test” , where the measured value (Est,24) shall comply with that stated in “ Requirements on MEPS for electric storage tank boiling water heaters”		Nil	NEQ

Product	Regulations	Standards			
		Domestic Standards	Please tick box if mandatory	Relevant International Standards	Extent of Alignment
		CNS 13783-1 (2013) or CNS 13803 (2003)		CISPR 14-1 (2011) CISPR 11 (1997)	MOD
		CNS 15663 (2013) Section 5 “ Marking of Presence”		Nil	NEQ
Electric portable immersion heaters (inspection scope: rated voltage not exceeding 250V and rated output power not exceeding 1650W) ¹	ditto	CNS 60335-1 (2014)	√	IEC 60335-1 (2013)	MOD
		CNS 60335-2-74 (2015)		IEC 60335-2-74 (2009)	MOD
		CNS 13783-1 (2013)		CISPR 14-1 (2011)	MOD
		CNS 15663 (2013) Section 5 “ Marking of Presence”		Nil	NEQ
Electric room heaters (inspection scope: rated voltage not exceeding 250V) ¹	ditto	CNS 60335-1 (2014)	√	IEC 60335-1 (2013)	MOD
		CNS 60335-2-30 (2015) or CNS 60335-2-61 (2015)		IEC 60335-2-30 (2009) IEC 60335-2-61 (2009)	MOD
		CNS 13783-1 (2013)		CISPR 14-1 (2011)	MOD
		CNS 15663 (2013) Section 5 “ Marking of Presence”		Nil	NEQ
Hair dryers (inspection scope: rated voltage not exceeding 250V, exclusive of those for animal use) ¹	ditto	CNS 60335-1 (2014)	√	IEC 60335-1 (2013)	MOD
		CNS 60335-2-23 (2015)		IEC 60335-2-23 (2012)	MOD
		CNS 13783-1 (2013)		CISPR 14-1 (2011)	MOD

Product	Regulations	Standards			
		Domestic Standards	Please tick box if mandatory	Relevant International Standards	Extent of Alignment
		CNS 15663 (2013) Section 5 “ Marking of Presence”		Nil	NEQ
Electric hot air brush (inspection scope: rated voltage not exceeding 250V, exclusive of those for animal use) ¹	ditto	CNS 60335-1 (2014)	√	IEC 60335-1 (2013)	MOD
		CNS 60335-2-23 (2015)		IEC 60335-2-23 (2012)	MOD
		CNS 13783-1 (2013)		CISPR 14-1 (2011)	MOD
		CNS 15663 (2013) Section 5 “ Marking of Presence”		Nil	NEQ
Electric hair setting curlers (inspection scope: rated voltage not exceeding 250V, exclusive of those for animal use) ¹	ditto	CNS 60335-1 (2014)	√	IEC 60335-1 (2013)	MOD
		CNS 60335-2-23 (2015)		IEC 60335-2-23 (2012)	MOD
		CNS 13783-1 (2013)		CISPR 14-1 (2011)	MOD
		CNS 15663 (2013) Section 5 “ Marking of Presence”		Nil	NEQ
Electric irons (inspection scope: rated voltage not exceeding 250V) ¹	ditto	CNS 60335-1 (2014)	√	IEC 60335-1 (2013)	MOD
		CNS 60335-2-3 (2014)		IEC 60335-2-3 (2012)	MOD
		CNS 13783-1 (2013)		CISPR 14-1 (2011)	MOD
		CNS 15663 (2013) Section 5 “ Marking of Presence”		Nil	NEQ
Microwave ovens (inspection scope: rated voltage not exceeding 250V) ¹	ditto	CNS 60335-1 (2014)	√	IEC 60335-1 (2013)	MOD
		CNS 60335-2-25 (2016)		IEC 60335-2-25 (2014)	MOD

Product	Regulations	Standards			
		Domestic Standards	Please tick box if mandatory	Relevant International Standards	Extent of Alignment
exceeding 250V) ¹		CNS 13803 (2003)		CISPR 11 (1997)	MOD
		CNS 15663 (2013) Section 5 “ Marking of Presence”		Nil	NEQ
Electric ovens (inspection scope: rated voltage not exceeding 250V) ¹	ditto	CNS 60335-1 (2014)	√	IEC 60335-1 (2013)	MOD
		CNS 60335-2-6 (2015) or CNS 60335-2-9 (2016)		IEC 60335-2-6 (2014) IEC 60335-2-9 (2012)	MOD
		CNS 13783-1 (2013)		CISPR 14-1 (2011)	MOD
		CNS 15663 (2013) Section 5 “ Marking of Presence”		Nil	NEQ
Electric cookers (inspection scope: woks, slow cookers, electric bowls, deep fat fryers of volume not exceeding 5L, frying pans, cooking pans, and pressure cookers (rated cooking pressure not exceeding 140kPa and rated capacity not exceeding 10L), rated voltage not exceeding 250V) ¹	ditto	CNS 60335-1 (2014)	√	IEC 60335-1 (2013)	MOD
		CNS 60335-2-13 (2014) or CNS 60335-2-15 (2014)		IEC 60335-2-13 (2009) IEC 60335-2-15 (2012)	MOD
		CNS 2518 (2016) Section 6.5 “ Heat efficiency test” & 7 “ Marking: (g) Heat efficiency (%) (if capacity no more than 10L and having inner pot to cook rice)		Nil	NEQ
		CNS 13783-1 (2013) or		CISPR 14-1 (2011)	MOD

Product	Regulations	Standards			
		Domestic Standards	Please tick box if mandatory	Relevant International Standards	Extent of Alignment
		CNS 13803 (2003)		CISPR 11 (1997)	
		CNS 15663 (2013) Section 5 “ Marking of Presence”		Nil	NEQ
Induction hotplates/ electromagnetic ovens (inspection scope: rated voltage not exceeding 250V) ¹	ditto	CNS 60335-1 (2014)	√	IEC 60335-1 (2013)	MOD
		CNS 60335-2-6 (2015) or CNS 60335-2-9 (2016)		IEC 60335-2-6 (2014) IEC 60335-2-9 (2012)	MOD
		CNS 13803 (2003)		CISPR 11 (1997)	MOD
		CNS 15663 (2013) Section 5 “ Marking of Presence”		Nil	NEQ
Indoor electric roasting ovens and grills (inspection scope: griddles, grills, breadmakers, roasted pots and roasters, rated voltage not exceeding 250V) ¹	ditto	CNS 60335-1 (2014)	√	IEC 60335-1 (2013)	MOD
		CNS 60335-2-6 (2015) or CNS 60335-2-9 (2016)		IEC 60335-2-6 (2014) IEC 60335-2-9 (2012)	MOD
		CNS 13783-1 (2013)		CISPR 14-1 (2011)	MOD
		CNS 15663 (2013) Section 5 “ Marking of Presence”		Nil	NEQ
Electric steamers (inspection scope: rated voltage not exceeding 250V and rated power consumption not exceeding 1650W) ¹	ditto	CNS 60335-1 (2014)	√	IEC 60335-1 (2013)	MOD
		CNS 60335-2-15 (2014) or CNS 60335-2-6 (2015)		IEC 60335-2-15 (2012) IEC 60335-2-6 (2014)	MOD
		CNS 13783-1 (2013) or		CISPR 14-1 (2011)	MOD

Product	Regulations	Standards			
		Domestic Standards	Please tick box if mandatory	Relevant International Standards	Extent of Alignment
		CNS 13803 (2003)		CISPR 11 (1997)	
		CNS 15663 (2013) Section 5 “ Marking of Presence”		Nil	NEQ
Electric pots/ Kettles (inspection scope: rated voltage not exceeding 250V and rated water capacity not exceeding 10L) ¹	ditto	CNS 60335-1 (2014)	√	IEC 60335-1 (2013)	MOD
		CNS 60335-2-15 (2014) & Section 5.4, 5.7, and 11 of CNS 12625 (2012) (if rated power consumption not exceeding 1.5kW)		IEC 60335-2-15 (2012)	MOD
				Nil	NEQ
		CNS 13783-1 (2013) or CNS 13803 (2003)		CISPR 14-1 (2011) CISPR 11 (1997)	MOD
		CNS 15663 (2013) Section 5 “ Marking of Presence”		Nil	NEQ
Electric coffee pots (inspection scope: rated power not exceeding 250V and rated power consumption not exceeding 1650W) ¹	ditto	CNS 60335-1 (2014)	√	IEC 60335-1 (2013)	MOD
		CNS 60335-2-15 (2014)		IEC 60335-2-15 (2012)	MOD
		CNS 13783-1 (2013) or CNS 13803 (2003)		CISPR 14-1 (2011) CISPR 11 (1997)	MOD

Product	Regulations	Standards			
		Domestic Standards	Please tick box if mandatory	Relevant International Standards	Extent of Alignment
		CNS 15663 (2013) Section 5 “ Marking of Presence”		Nil	NEQ
Toasters (inspection scope: rated voltage not exceeding 250V, exclusive of those transferring with rotary tracks) ¹	ditto	CNS 60335-1 (2014)	√	IEC 60335-1 (2013)	MOD
		CNS 60335-2-9 (2016)		IEC 60335-2-9 (2012)	MOD
		CNS 13783-1 (2013)		CISPR 14-1 (2011)	MOD
		CNS 15663 (2013) Section 5 “ Marking of Presence”		Nil	NEQ
Electric hotplates (inspection scope: rated voltage not exceeding 250V) ¹	ditto	CNS 60335-1 (2014)	√	IEC 60335-1 (2013)	MOD
		CNS 60335-2-6 (2015) or CNS 60335-2-9 (2016)		IEC 60335-2-6 (2014) IEC 60335-2-9 (2012)	MOD
		CNS 13783-1 (2013)		CISPR 14-1 (2011)	MOD
		CNS 15663 (2013) Section 5 “ Marking of Presence”		Nil	NEQ
Electric meat grills/ roasters (inspection scope: rated voltage not exceeding 250V) ¹	ditto	CNS 60335-1 (2014)	√	IEC 60335-1 (2013)	MOD
		CNS 60335-2-9 (2016)		IEC 60335-2-9 (2012)	MOD
		CNS 13783-1 (2013)		CISPR 14-1 (2011)	MOD
		CNS 15663 (2013) Section 5 “ Marking of		Nil	NEQ

Product	Regulations	Standards			
		Domestic Standards	Please tick box if mandatory	Relevant International Standards	Extent of Alignment
		Presence”			
Electric ranges (inspection scope: rated voltage not exceeding 250V and rated power consumption not exceeding 10kW) ¹	ditto	CNS 60335-1 (2014)	√	IEC 60335-1 (2013)	MOD
		CNS 60335-2-6 (2015)		IEC 60335-2-6 (2014)	MOD
		CNS 13783-1 (2013) or CNS 13803 (2003)		CISPR 14-1 (2011) CISPR 11 (1997)	MOD
		CNS 15663 (2013) Section 5 “ Marking of Presence”		Nil	NEQ
Electric-thermal dish dryers (inspection scope: rated voltage not exceeding 250V and rated power consumption not exceeding 1650W) ¹	ditto	CNS 60335-1 (2014)	√	IEC 60335-1 (2013)	MOD
		CNS 60335-2-5 (2015)		IEC 60335-2-5 (2012)	MOD
		CNS 13783-1 (2013)		CISPR 14-1 (2011)	MOD
		CNS 15663 (2013) Section 5 “ Marking of Presence”		Nil	NEQ
Electric two-sided cooking plates (inspection scope: rated voltage not exceeding 250V and rated power consumption not exceeding 1650W) ¹	ditto	CNS 60335-1 (2014)	√	IEC 60335-1 (2013)	MOD
		CNS 60335-2-9 (2016)		IEC 60335-2-9 (2012)	MOD
		CNS 13783-1 (2013)		CISPR 14-1 (2011)	MOD
		CNS 15663 (2013) Section 5 “ Marking of Presence”		Nil	NEQ
Electro-thermal bedding and	ditto	CNS 60335-1 (2014)	√	IEC 60335-1 (2013)	MOD

Product	Regulations	Standards			
		Domestic Standards	Please tick box if mandatory	Relevant International Standards	Extent of Alignment
clothing dryers (inspection scope: rated voltage not exceeding 250V) ¹		CNS 60335-2-43 (2015)		IEC 60335-2-43 (2008)	MOD
		CNS 13783-1 (2013)		CISPR 14-1 (2011)	MOD
		CNS 15663 (2013) Section 5 " Marking of Presence"		Nil	NEQ
Electric fish tank heaters (inspection scope: rated voltage not exceeding 250V and rated power consumption not exceeding 1650W) ¹	ditto	CNS 60335-1 (2014)	√	IEC 60335-1 (2013)	MOD
		CNS 60335-2-55 (2015)		IEC 60335-2-55 (2008)	MOD
		CNS 13783-1 (2013)		CISPR 14-1 (2011)	MOD
		CNS 15663 (2013) Section 5 " Marking of Presence"		Nil	NEQ
Electric warming plates (inspection scope: rated voltage not exceeding 250V and rated power consumption not exceeding 1650W) ¹	ditto	CNS 60335-1 (2014)	√	IEC 60335-1 (2013)	MOD
		CNS 60335-2-12 (2014)		IEC 60335-2-12 (2008)	MOD
		CNS 13783-1 (2013) or CNS 13803 (2003)		CISPR 14-1 (2011) CISPR 11 (1997)	MOD
		CNS 15663 (2013) Section 5 " Marking of Presence"		Nil	NEQ
Electro-thermal mosquito killers (inspection scope:	ditto	CNS 60335-1 (2014)	√	IEC 60335-1 (2013)	MOD
		CNS 13783-1 (2013)		CISPR 14-1 (2011)	MOD

Product	Regulations	Standards			
		Domestic Standards	Please tick box if mandatory	Relevant International Standards	Extent of Alignment
rated voltage not exceeding 250V) ¹		CNS 15663 (2013) Section 5 “ Marking of Presence”		Nil	NEQ
Electro-thermal aromas/ scent diffusers (inspection scope: rated voltage not exceeding 250V) ¹	ditto	CNS 60335-1 (2014)	√	IEC 60335-1 (2013)	MOD
		CNS 13783-1 (2013)		CISPR 14-1 (2011)	MOD
		CNS 15663 (2013) Section 5 “ Marking of Presence”		Nil	NEQ
Electro-thermal meal box heaters (inspection scope: rated voltage not exceeding 250V and rated power consumption not exceeding 1650W) ¹	ditto	CNS 60335-1 (2014)	√	IEC 60335-1 (2013)	MOD
		CNS 60335-2-6 (2015)		IEC 60335-2-6 (2014)	MOD
		CNS 13783-1 (2013) or CNS 13803 (2003)		CISPR 14-1 (2011) CISPR 11 (1997)	MOD
		CNS 15663 (2013) Section 5 “ Marking of Presence”		Nil	NEQ
Electro-thermal pots (inspection scope: rated voltage not exceeding 250V and rated power consumption not exceeding 1650W) ¹	ditto	CNS 60335-1 (2014)	√	IEC 60335-1 (2013)	MOD
		CNS 60335-2-15 (2014)		IEC 60335-2-15 (2012)	MOD
		CNS 13783-1 (2013) or CNS 13803 (2003)		CISPR 14-1 (2011) CISPR 11 (1997)	MOD
		CNS 15663 (2013) Section 5 “ Marking of Presence”		Nil	NEQ
Food warming appliance	ditto	CNS 60335-1 (2014)	√	IEC 60335-1 (2013)	MOD

Product	Regulations	Standards			
		Domestic Standards	Please tick box if mandatory	Relevant International Standards	Extent of Alignment
(inspection scope: rated voltage not exceeding 250V and rated power consumption not exceeding 1650W) ¹		CNS 60335-2-6 (2015) or CNS 60335-2-9 (2016)		IEC 60335-2-6 (2014) IEC 60335-2-9 (2012)	MOD
		CNS 13783-1 (2013)		CISPR 14-1 (2011)	MOD
		CNS 15663 (2013) Section 5 “ Marking of Presence”		Nil	NEQ
Electric warming pots/ Thermos (inspection scope: rated voltage not exceeding 250V and rated power consumption not exceeding 1650W) ¹	ditto	CNS 60335-1 (2014)	√	IEC 60335-1 (2013)	MOD
		CNS 60335-2-15 (2014)		IEC 60335-2-15 (2012)	MOD
		CNS 13783-1 (2013) or CNS 13803 (2003)		CISPR 14-1 (2011) CISPR 11 (1997)	MOD
		CNS 15663 (2013) Section 5 “ Marking of Presence”		Nil	NEQ
Feeding bottle sterilizers (inspection scope: rated voltage not exceeding 250V and rated power consumption not exceeding 1650W) ¹	ditto	CNS 60335-1 (2014)	√	IEC 60335-1 (2013)	MOD
		CNS 60335-2-15 (2014)		IEC 60335-2-15 (2012)	MOD
		CNS 13783-1 (2013)		CISPR 14-1 (2011)	MOD
		CNS 15663 (2013) Section 5 “ Marking of Presence”		Nil	NEQ
Egg boilers (inspection scope: rated voltage not	ditto	CNS 60335-1 (2014)	√	IEC 60335-1 (2013)	MOD
		CNS 60335-2-15 (2014)		IEC 60335-2-15 (2012)	MOD

Product	Regulations	Standards			
		Domestic Standards	Please tick box if mandatory	Relevant International Standards	Extent of Alignment
exceeding 250V and rated power consumption not exceeding 1650W) ¹		CNS 13783-1 (2013)		CISPR 14-1 (2011)	MOD
		CNS 15663 (2013) Section 5 “ Marking of Presence”		Nil	NEQ
Water filled foot massagers (inspection scope: rated voltage not exceeding 250V, including those air pressure type equipment, exclusive of those medical devices specified by the Pharmaceutical Affairs Act) ¹	ditto	CNS 60335-1 (2014)	√	IEC 60335-1 (2013)	MOD
		CNS 60335-2-32 (2015)		IEC 60335-2-32 (2013)	MOD
		CNS 13783-1 (2013)		CISPR 14-1 (2011)	MOD
		CNS 15663 (2013) Section 5 “ Marking of Presence”		Nil	NEQ
Electric massage appliances (inspection scope: rated voltage not exceeding 250V, including those air pressure type equipment, exclusive of those medical devices specified by the Pharmaceutical Affairs Act) ¹	ditto	CNS 60335-1 (2014)	√	IEC 60335-1 (2013)	MOD
		CNS 60335-2-32 (2015)		IEC 60335-2-32 (2013)	MOD
		CNS 13783-1 (2013)		CISPR 14-1 (2011)	MOD
		CNS 15663 (2013) Section 5 “ Marking of Presence”		Nil	NEQ
Water Dispenser (Including water dispenser only supplied by bottled and packaged water; inspection scope: only below 250V) ¹	ditto	CNS 60335-1 (2014)	√	IEC 60335-1 (2013)	MOD
		CNS 60335-2-15 (2014)		IEC 60335-2-15 (2012)	MOD
		CNS 13516 (2014) Section 6.3, 6.7, 6.9,		Nil	NEQ

Product	Regulations	Standards			
		Domestic Standards	Please tick box if mandatory	Relevant International Standards	Extent of Alignment
		6.11 and 7.1(i)			
		CNS 15929 (2016) Section 6.3 " Water temperature" , Section 6.8 " Storage tank capacity" , Section 6.10 " The power consumption for preparation per 24 hours E24"		Nil	NEQ
		CNS 13783-1 (2013) or CNS 13803 (2003)		CISPR 14-1 (2011) CISPR 11 (1997)	MOD
		CNS 15663 (2013) Section 5 " Marking of Presence"		Nil	NEQ
Drinking water supplier (inspection scope: rated voltage not exceeding single-phase 250V AC, including those with/charged with a AC to DC adapter)	ditto	CNS 60335-1 (2014)	√	IEC 60335-1 (2013)	MOD
		CNS 60335-2-15 (2014)		IEC 60335-2-15 (2012)	MOD
		CNS 3910 (2016) Section 5, 8.3, 10 and 13		Nil	NEQ
		CNS 13783-1 (2013) or CNS 13803 (2003)		CISPR 14-1 (2011) CISPR 11 (1997)	MOD
		CNS 15663 (2013) Section 5 " Marking of Presence"		Nil	NEQ
Electric Storage tank water heater	ditto	CNS 60335-1 (2014)	√	IEC 60335-1 (2013)	MOD
		CNS 60335-2-21 (2015)		IEC 60335-2-21 (2012)	MOD

Product	Regulations	Standards			
		Domestic Standards	Please tick box if mandatory	Relevant International Standards	Extent of Alignment
(inspection scope: Does not include solar water heaters, rated voltage not exceeding single-phase 250V AC) ¹		CNS 11010(2013) Section 8.11 □ Capacity of inner tank” &8.14“ Standardized standby loss of every 24 hours, Est,24” and the measured value of Est,24 must meet the requirements of Minimum Energy Performance Standard (MEPS);		Nil	NEQ
		CNS 13783-1 (2013)		CISPR 14-1 (2011)	MOD
		CNS 15663 (2013) Section 5 “ Marking of Presence”		Nil	NEQ
Air conditioners with hermetic type compressor (inspection scope: those using single-phase not exceeding 250V or three-phase not exceeding 600V, and with cooling capacity not exceeding 71kW) ¹	ditto	CNS 60335-1 (2014)	√	IEC 60335-1 (2013)	MOD
		CNS 60335-2-40 (2015)		IEC 60335-2-40 (2013)	MOD
		CNS 3615(2013) Sections 5.7, 5.8, 5.9 and 5.10.The heating performance of Section 5.10 will not be implemented temporarily); CNS 15663 (2013) Section 5		Nil	NEQ

Product	Regulations	Standards			
		Domestic Standards	Please tick box if mandatory	Relevant International Standards	Extent of Alignment
		<input type="checkbox"/> Marking of Presence”			
		CNS 13783-1 (2013) or CNS 13438 (2006)		CISPR 14-1 (2011) CISPR 22 (2005)	MOD
		CNS 15663 (2013) Section 5 “ Marking of Presence”		Nil	NEQ
Plugs and socket-outlets for fixed wiring (inspection scope: Voltage not exceeding 250 Vac with types and dimensions same or consistent with the national standard CNS 690)	ditto	CNS 690 (2016)	√	Nil	NEQ
		CNS 15767-1 (2014)		IEC 60884-1 (2006)	MOD
		CNS 15663 (2013) Section 5 “ Marking of Presence”		Nil	NEQ
Adapters (inspection scope: Voltage not exceeding 250 Vac with types and dimensions same or consistent with the national standard CNS 690, excluding the type of plug-end conforms to figure 16 of CNS 690)	ditto	CNS 690 (2016)	√	Nil	NEQ
		CNS 15767-1 (2014)		IEC 60884-1 (2006)	MOD
		CNS 15767-2-5 (2014)		IEC 60884-2-5 (1995)	MOD
		CNS 15663 (2013) Section 5 “ Marking of Presence”		Nil	NEQ
Cord extension sets (inspection scope: Voltage not exceeding 250 Vac)	ditto	CNS 690 (2016)	√	Nil	NEQ
		CNS 15767-1 (2014)		IEC 60884-1 (2006)	MOD
		CNS 15767-2-7 (2016)		IEC 60884-2-7 (2011)	MOD

Product	Regulations	Standards			
		Domestic Standards	Please tick box if mandatory	Relevant International Standards	Extent of Alignment
		CNS 15663 (2013) Section 5 “ Marking of Presence”		Nil	NEQ
Non-detachable cord sets (inspection scope: Voltage not exceeding 250 Vac)	ditto	CNS 690 (2016)	√	Nil	NEQ
		CNS 15767-1 (2014)		IEC 60884-1 (2006)	MOD
		CNS 15663 (2013) Section 5 “ Marking of Presence”		Nil	NEQ
Detachable cord sets (inspection scope: Voltage not exceeding 250 Vac)	ditto	CNS 690 (2016)	√	Nil	NEQ
		CNS 15872 (2016)		Nil	NEQ
		CNS 6797 (1991)		Nil	NEQ
		CNS 15663 (2013) Section 5 “ Marking of Presence”		Nil	NEQ
Cord sets (inspection scope: Voltage not exceeding 250 Vac)	ditto	CNS 690 (2016)	√	Nil	NEQ
		CNS 60799 (2016)		IEC 60799 (1998)	MOD
		IEC 60320-1 (2001)		IEC 60320-1 (2001)	IDT
		CNS 15663 (2013) Section 5 “ Marking of Presence”		Nil	NEQ
Cable reels (inspection scope: Voltage not exceeding 250)	ditto	CNS 690 (2016)	√	Nil	NEQ
		CNS 61242 (2016)		IEC 61242 (2015)	MOD

Product	Regulations	Standards			
		Domestic Standards	Please tick box if mandatory	Relevant International Standards	Extent of Alignment
Vac)		CNS 15663 (2013) Section 5 “ Marking of Presence”		Nil	NEQ
Electric bells (inspection scope: only not exceeding 300V)	ditto	CNS 8799 (1990)	√	Nil	NEQ
		CNS 15663 (2013) Section 5 “ Marking of Presence”		Nil	NEQ
No fuse breakers (inspection scope: With leakage protection function, only those rated voltage not exceeding 600V, rated current not exceeding 800A, and rupture capacity not exceeding 220V/50kA, 380V/30kA, 440V/25kA, or 600V/20kA)	ditto	CNS 14816-2 (2004) or	√	IEC 60947-2 (2001)	MOD
		IEC 60898-1 (2003)		IEC 60898-1 (2003)	IDT
		CNS 15663 (2013) Section 5 “ Marking of Presence”		Nil	NEQ
Leakage circuit breakers (inspection scope: Only those rated voltage not exceeding 600V, rated current not exceeding 225A. For those with no fuse switch function, rupture capacity not exceeding 220V/50kA, 380V/30kA, 440V/25kA, or 600V/20kA)	ditto	CNS 5422 (2006) or	√	Nil	NEQ
		IEC 61008-1 (2002) or		IEC 61008-1 (2002)	IDT
		IEC 61009-1 (2003)		IEC 61009-1 (2003)	
		CNS 15663 (2013) Section 5 “ Marking of Presence”		Nil	NEQ
Household switch for fixed wiring (inspection scope: Only	ditto	CNS 695 (1987) or	√	Nil	NEQ
		IEC 60669-1 (2000)		IEC 60669-1 (2000)	IDT

Product	Regulations	Standards			
		Domestic Standards	Please tick box if mandatory	Relevant International Standards	Extent of Alignment
not exceeding 300V)		CNS 15663 (2013) Section 5 “ Marking of Presence”		Nil	NEQ
Knife switch (inspection scope: Only not exceeding 300V)	ditto	CNS 1488 (1993) or	√	Nil	NEQ
		CNS 696 (1984)		Nil	
		CNS 15663 (2013) Section 5 “ Marking of Presence”		Nil	NEQ
Plugs and socket-outlets for appliances (inspection scope: Only not exceeding 300V)	ditto	CNS 6797 (1991)	√	Nil	NEQ
		CNS 15663 (2013) Section 5 “ Marking of Presence”		Nil	NEQ
Polyvinyl chloride(PVC) insulated power cables (inspection scope: Only those without connectors and rated voltage not exceeding 1000V but over 80V)	ditto	CNS 3301 (1989) or	√	Nil	NEQ
		CNS 6556 (1984) or	√	Nil	NEQ
		IEC 60227-1 (1998) + IEC 60227-3 (1997) or IEC 60227-4 (1997) or IEC 60227-5 (2003) or IEC 60227-6 (2001) or IEC 60227-7 (2003)	√	IEC 60227-1 (1998) IEC 60227-3 (1997) IEC 60227-4 (1997) IEC 60227-5 (2003) IEC 60227-6 (2001) IEC 60227-7 (2003)	IDT
		CNS 15663 (2013) Section 5 “ Marking of Presence”	√	Nil	NEQ
Polyvinyl chloride(PVC)	ditto	CNS 679 (1998) or	√	Nil	NEQ

Product	Regulations	Standards			
		Domestic Standards	Please tick box if mandatory	Relevant International Standards	Extent of Alignment
insulated wires (inspection scope: Only those without connectors and rated voltage not exceeding 1000V but over 80V)		IEC 60227-1 (1998) + IEC 60227-3 (1997) or IEC 60227-4 (1997) or IEC 60227-5 (2003) or IEC 60227-6 (2001) or IEC 60227-7 (2003)		IEC 60227-1 (1998) IEC 60227-3 (1997) IEC 60227-4 (1997) IEC 60227-5 (2003) IEC 60227-6 (2001) IEC 60227-7 (2003)	IDT
		CNS 15663 (2013) Section 5 “ Marking of Presence”		Nil	NEQ
Rubber insulated wires (inspection scope: Only those without connectors and rated voltage not exceeding 1000V but over 80V)	ditto	CNS 675 (2004) or	√	Nil	NEQ
		IEC 60245-1 (2003) + IEC 60245-4 (2004)		IEC 60245-1 (2003) IEC 60245-4 (2004)	IDT
		CNS 15663 (2013) Section 5 “ Marking of Presence”		Nil	NEQ
Rubber flexible cords (inspection scope: Only those without connectors and rated voltage not exceeding 1000V but over 80V)	ditto	CNS 546 (2004) or	√	Nil	NEQ
		IEC 60245-1 (2003) + IEC 60245-4 (2004)		IEC 60245-1 (2003) IEC 60245-4 (2004)	IDT
		CNS 15663 (2013) Section 5 “ Marking of Presence”		Nil	NEQ
Polyvinyl chloride(PVC)	ditto	CNS 3199 (1994) or	√	Nil	NEQ

Product	Regulations	Standards			
		Domestic Standards	Please tick box if mandatory	Relevant International Standards	Extent of Alignment
flexible cords (inspection scope: Only those without connectors and rated voltage not exceeding 1000V but over 80V)		IEC 60227-1 (1998) + IEC 60227-3 (1997) or IEC 60227-4 (1997) or IEC 60227-5 (2003) or IEC 60227-6 (2001) or IEC 60227-7 (2003)		IEC 60227-1 (1998) IEC 60227-3 (1997) IEC 60227-4 (1997) IEC 60227-5 (2003) IEC 60227-6 (2001) IEC 60227-7 (2003)	IDT
		CNS 15663 (2013) Section 5 " Marking of Presence"		Nil	NEQ
Rubber insulated lead wires (inspection scope: Only those without connectors and rated voltage not exceeding 1000V but over 80V)	ditto	CNS 5747 (2004) or	√	Nil	NEQ
		IEC 60245-1 (2003) + IEC 60245-4 (2004)		IEC 60245-1 (2003) IEC 60245-4 (2004)	IDT
		CNS 15663 (2013) Section 5 " Marking of Presence"		Nil	NEQ
Polyvinyl chloride(PVC) insulated wires for electric apparatus (inspection scope: Only those without connectors and rated voltage not exceeding 1000V but over 80V)	ditto	CNS 6070 (1986) or	√	Nil	NEQ
		IEC 60227-1 (1998) + IEC 60227-3 (1997) or IEC 60227-4 (1997) or IEC 60227-5 (2003) or IEC 60227-6 (2001) or IEC 60227-7 (2003)		IEC 60227-1 (1998) IEC 60227-3 (1997) IEC 60227-4 (1997) IEC 60227-5 (2003) IEC 60227-6 (2001) IEC 60227-7 (2003)	IDT
		CNS 15663 (2013) Section 5 " Marking of Presence"		Nil	NEQ

Product	Regulations	Standards			
		Domestic Standards	Please tick box if mandatory	Relevant International Standards	Extent of Alignment
Grade Heat-resistant PVC insulated wires (inspection scope: Only those without connectors and rated voltage not exceeding 1000V but over 80V)	ditto	CNS 8379 (1995) or	√	Nil	NEQ
		IEC 60227-1 (1998) + IEC 60227-3 (1997) or IEC 60227-4 (1997) or IEC 60227-5 (2003) or IEC 60227-6 (2001) or IEC 60227-7 (2003)		IEC 60227-1 (1998) IEC 60227-3 (1997) IEC 60227-4 (1997) IEC 60227-5 (2003) IEC 60227-6 (2001) IEC 60227-7 (2003)	IDT
		CNS 15663 (2013) Section 5 “ Marking of Presence”		Nil	NEQ
Polyvinyl chloride(PVC) insulated wires for outdoor use (inspection scope: Only those without connectors and rated voltage not exceeding 1000V but over 80V)	ditto	CNS 8559 (1987) or	√	Nil	NEQ
		IEC 60227-1 (1998) + IEC 60227-3 (1997) or IEC 60227-4 (1997) or IEC 60227-5 (2003) or IEC 60227-6 (2001) or IEC 60227-7 (2003)	√	IEC 60227-1 (1998) IEC 60227-3 (1997) IEC 60227-4 (1997) IEC 60227-5 (2003) IEC 60227-6 (2001) IEC 60227-7 (2003)	IDT
		CNS 15663 (2013) Section 5 “ Marking of Presence”		Nil	NEQ
Polyvinyl chloride(PVC)	ditto	CNS 10314 (1983) or	√	Nil	NEQ

Product	Regulations	Standards			
		Domestic Standards	Please tick box if mandatory	Relevant International Standards	Extent of Alignment
insulated wires (inspection scope: Only those without connectors and rated voltage not exceeding 1000V but over 80V)		IEC 60227-1 (1998) + IEC 60227-3 (1997) or IEC 60227-4 (1997) or IEC 60227-5 (2003) or IEC 60227-6 (2001) or IEC 60227-7 (2003)		IEC 60227-1 (1998) IEC 60227-3 (1997) IEC 60227-4 (1997) IEC 60227-5 (2003) IEC 60227-6 (2001) IEC 60227-7 (2003)	IDT
		CNS 15663 (2013) Section 5 “ Marking of Presence”		Nil	NEQ
Polyvinyl chloride(PVC) insulated service wires (inspection scope: Only those without connectors and rated voltage not exceeding 1000V but over 80V)	ditto	CNS 7781 (1987) or	√	Nil	NEQ
		IEC 60227-1 (1998) + IEC 60227-3 (1997) or IEC 60227-4 (1997) or IEC 60227-5 (2003) or IEC 60227-6 (2001) or IEC 60227-7 (2003)		IEC 60227-1 (1998) IEC 60227-3 (1997) IEC 60227-4 (1997) IEC 60227-5 (2003) IEC 60227-6 (2001) IEC 60227-7 (2003)	IDT
		CNS 15663 (2013) Section 5 “ Marking of Presence”		Nil	NEQ
Rubber insulated portable flexible cables (inspection scope: Only those without connectors and rated voltage not exceeding 1000V but over 80V)	ditto	CNS 10741 (2004) or	√	Nil	NEQ
		CNS 10599 (2004) or		Nil	NEQ
		IEC 60245-1 (2003) + IEC 60245-4 (2004)		IEC 60245-1 (2003) IEC 60245-4 (2004)	IDT
		CNS 15663 (2013)		Nil	NEQ

Product	Regulations	Standards			
		Domestic Standards	Please tick box if mandatory	Relevant International Standards	Extent of Alignment
		Section 5 “ Marking of Presence”			
Self-ballasted fluorescent lamps	ditto	CNS 14125 (2014) excluding the sections "Low Temperature Starting Time" & "UV Radiation"	√	Nil	NEQ
		CNS 14115 (2009)		CISPR 15 (2005)	MOD
		CNS 15663 (2013) Section 5 “ Marking of Presence”		Nil	NEQ
Hot Cathode Fluorescent Lamp	ditto	CNS 691 (2019)	√	Nil	NEQ
		CNS 15663 (2013) Section 5 “ Marking of Presence”		Nil	NEQ
AC Supplied Ballasts	ditto	CNS 13755 (2014)	√	Nil	NEQ
		CNS 927 (2006)		Nil	NEQ
		CNS 15663 (2013) Section 5 “ Marking of Presence”		Nil	NEQ
Self-ballasted LED lamps (Inspection scope: those are single phase, not exceeding 300V, exceeding 50V,	ditto	CNS 15436 (2012)	√	IEC 62560 (2011)	MOD
		CNS 15630 (2019)		IEC 62612 (2018)	MOD
		CNS 14115 (2016)		CISPR 15 (2015)	MOD

Product	Regulations	Standards			
		Domestic Standards	Please tick box if mandatory	Relevant International Standards	Extent of Alignment
including CRI above 95)		CNS 15663 (2013) Section 5 “ Marking of Presence”		Nil	NEQ
Fluorescent lamps, hot cathode (inspection scope: Only Compact fluorescent lamps)	ditto	CNS 14576 (2007)	√	Nil	NEQ
		CNS 15663 (2013) Section 5 “ Marking of Presence”		Nil	NEQ
Electric lamps for general indoor lighting purposes (inspection scope: Only including chandelier and other ceiling or wall lighting fittings, exclusive of those used for public places or on streets)	ditto	CNS 14335 (1999)	√	IEC 60598-1 (1996)	MOD
		IEC 60598-2-1 (1979) or IEC 60598-2-2 (1979) or IEC 60598-2-4 (1997) or IEC 60598-2-6 (1994) or IEC 60598-2-20 (1998) or IEC 60598-2-23 (1996)		IEC 60598-2-1 (1979) IEC 60598-2-2 (1979) IEC 60598-2-4 (1997) IEC 60598-2-6 (1994) IEC 60598-2-20 (1998) IEC 60598-2-23 (1996)	IDT
		CNS 14115 (2004)		CISPR 15 (2000)	MOD
		CNS 15663 (2013) Section 5 “ Marking of Presence”		Nil	NEQ
Electric table, desk, bedside, or floor-standing lamps for general indoor lighting use (inspection scope: Only not exceeding AC 300V)	ditto	CNS 14335 (1999)	√	IEC 60598-1 (1996)	MOD
		IEC 60598-2-4 (1997) or IEC 60598-2-6 (1994)		IEC 60598-2-4 (1997) IEC 60598-2-6 (1994)	IDT
		CNS 14115 (2004)		CISPR 15 (2000)	MOD
		CNS 15663 (2013) Section 5 “ Marking of		Nil	NEQ

Product	Regulations	Standards			
		Domestic Standards	Please tick box if mandatory	Relevant International Standards	Extent of Alignment
		Presence”			
Lighting sets used for Christmas trees (inspection scope: Lighting chains not exceeding AC 300V)	ditto	CNS 14335 (1999)	√	IEC 60598-1 (1996)	MOD
		IEC 60598-2-20 (1998)		IEC 60598-2-20 (1998)	IDT
		CNS 15663 (2013) Section 5 “ Marking of Presence”		Nil	NEQ
Buddhistic lights for table	ditto	CNS 14335 (1999)	√	IEC 60598-1 (1996)	MOD
		IEC 60598-2-1 (1987) or IEC 60598-2-2 (1997) or IEC 60598-2-4 (1997) or IEC 60598-2-6 (1996) or IEC 60598-2-23 (2001)		IEC 60598-2-1 (1987) IEC 60598-2-2 (1997) IEC 60598-2-4 (1997) IEC 60598-2-6 (1996) IEC 60598-2-23 (2001)	IDT
		CNS 14115 (2004)		CISPR 15 (2000)	MOD
		CNS 15663 (2013) Section 5 “ Marking of Presence”		Nil	NEQ
Aquarium lighting fixture	ditto	CNS 14335 (1999)	√	IEC 60598-1 (1996)	MOD
		IEC 60598-2-11 (2005)		IEC 60598-2-11 (2005)	IDT
		CNS 14115 (2004)		CISPR 15 (2000)	MOD
		CNS 15663 (2013) Section 5 “ Marking of Presence”		Nil	NEQ
Single-phase AC motors	ditto	CNS 1057 (2001) or	√	Nil	NEQ

Product	Regulations	Standards			
		Domestic Standards	Please tick box if mandatory	Relevant International Standards	Extent of Alignment
(inspection scope: Inspection scope exclusive of those with attached devices, used as household appliances, or explosion-proof motors)		CNS 3618 (1992)		Nil	NEQ
		CNS 15663 (2013) Section 5 “ Marking of Presence”		Nil	NEQ
Low voltage three-phase induction motors (inspection scope: Only the rated output power under 74.6kw(100HP) and exclusive of those with attached devices, used as household appliances, or explosion-proof motors)	ditto	CNS 14400 (2012): Low-voltage three-phase squirrel-cage induction motors(for general use)	√	Nil	NEQ
		CNS 1056 (2011): Other low-voltage three-phase induction motors (for class-A insulation)		Nil	NEQ
		CNS 15663 (2013) Section 5 “ Marking of Presence”		Nil	NEQ
Electronic toilet seats (heated seats or spray seats of toilets, inspection scope: rated voltage not exceeding 250V AC) ¹	ditto	CNS 60335-1(2014)	√	IEC 60335-1 (2013)	MOD
		CNS 60335-2-84 (2017)		IEC 60335-2-84 (2013)	MOD
		CNS 13783-1 (2013)		CISPR 14-1 (2011)	MOD
		CNS 15663 (2013) Section 5 “ Marking of Presence”		Nil	NEQ
Double-capped LED lamps (inspection scope: those for general purpose, including CRI	ditto	CNS 15438 (2019)	√	Nil	NEQ
		CNS 15829 (2015)		IEC 62776 (2014)	MOD
		CNS 15983 (2019)		Nil	NEQ

Product	Regulations	Standards			
		Domestic Standards	Please tick box if mandatory	Relevant International Standards	Extent of Alignment
above 95) (enters into force on 1 January 2022)		CNS 62931 (2019)		IEC 62931 (2017)	MOD
		CNS 16027 (2019)		Nil	NEQ
		CNS 14115 (2016)		CISPR 15 (2015)	MOD
		CNS 15663 (2013) Section 5 “ Marking of Presence”		Nil	NEQ

¹The product powered by USB cord/port DC 5V and without an AC to DC adaptor, only powered by and with power supply for automotive cigar lighters, only powered by three-phase (air conditioner excepted) or only-batteries shall not be subject to mandatory inspection scope.

2.2. Electronics/IT products

Product	Regulations	Standards			
		Domestic Standards	Please tick box if mandatory	Relevant International Standards	Extent of Alignment
Battery charger for computer, communication and consumer electronics (inspection scope: AC-DC battery chargers for computer, communication and consumer electronics)	Commodity Inspection Act	CNS 13438 (2006) and CNS 14336-1 (2010) or CNS 14408 (2003); or CNS 13783-1 (2013) and CNS 60335-1 (2014) and CNS 60335-2-29 (2016)	√	CISPR 22 IEC 60950 IEC 60065 CISPR 14-1 IEC 60335-1 IEC 60335-2-29	IDT MOD MOD IDT MOD MOD
		Section 5 "Marking of presence" of CNS 15663 (2013)		Nil	NEQ
Chargers for electrical bicycles	ditto	CNS 15425-1 (2015)	√	Nil	NEQ
		CNS 13438 (2006)		CISPR 22	IDT
		Section 5 "Marking of presence" of CNS 15663 (2013)		Nil	NEQ
Chargers for electrical assisted bicycles	ditto	CNS 15425-1 (2015)	√	Nil	NEQ
		CNS 13438 (2006)		CISPR 22	IDT
		Section 5 "Marking of presence" of CNS 15663 (2013)		Nil	NEQ
Wireless chargers	ditto	CNS 13438 (2006)	√	CISPR 22	IDT

Product	Regulations	Standards			
		Domestic Standards	Please tick box if mandatory	Relevant International Standards	Extent of Alignment
		CNS 14336-1 (2010)		IEC 60950	MOD
		Section 5 "Marking of presence" of CNS 15663 (2013)		Nil	NEQ
Other power supply (inspection scope: Off-board chargers for electric motorcycles)	ditto	CNS 15425-1 (2015)	√	Nil	NEQ
		CNS 13438 (2006)		CISPR 22	IDT
		Section 5 "Marking of presence" of CNS 15663 (2013)		Nil	NEQ
Other static converter (inspection scope: AC-DC adaptors excluding stepless adjustable DC power supplier)	ditto	IEC 61558-1 (2009)	√	IEC 61558-1 (2009)	IDT
		Section 5 "Marking of presence" of CNS 15663 (2013)		Nil	NEQ
Other static converter (inspection scope: chargers for electric motorcycles)	ditto	CNS 15425-1 (2015)	√	Nil	NEQ
		CNS 13438 (2006)		CISPR 22	IDT
		Section 5 "Marking of presence" of CNS 15663 (2013)		Nil	NEQ
Power supplies for	ditto	CNS 13438 (2006)	√	CISPR 22	IDT

Product	Regulations	Standards			
		Domestic Standards	Please tick box if mandatory	Relevant International Standards	Extent of Alignment
automotive cigar lighters		CNS 14336-1 (2010)		IEC 60950	MOD
		Section 5 "Marking of presence" of CNS 15663 (2013)		Nil	NEQ
Electric motorcycle charging system equipment (Inspection scope: only for stationary and conductive power supply system)	ditto	CNS 16125 (2020)	√	Nil	NEQ
		CNS 16127 (2020)		Nil	NEQ
		CNS 16128 (2020)		Nil	NEQ
		Section 5 "Marking of presence" of CNS 15663 (2013)		Nil	NEQ
Electric motorcycle battery swap system equipment (Inspection scope: only for stationary and conductive power supply system)	ditto	CNS 16125 (2020)	√	Nil	NEQ
		CNS 16126 (2020)		Nil	NEQ
		Section 5 "Marking of presence" of CNS 15663 (2013)		Nil	NEQ
Secondary lithium mobile power bank for computer, communication and consumer electronics	ditto	CNS 15364 (2013)	√	IEC 62133	MOD
		CNS 14336-1 (2010)		IEC 60950	MOD
		CNS 13438 (2006)		CISPR 22	IDT
Secondary lithium cells and batteries for	ditto	CNS 15364 (2013)	√	IEC 62133	MOD

Product	Regulations	Standards			
		Domestic Standards	Please tick box if mandatory	Relevant International Standards	Extent of Alignment
computer, communication and consumer electronics except button type					
Secondary lithium batteries for electrical motorcycles use	ditto	CNS 15424-1 (2015)	√	Nil	NEQ
		CNS 15424-2 (2015)		Nil	NEQ
		CNS 15387 (2015)		Nil	NEQ
Secondary lithium batteries for electrical bicycles use	ditto	CNS 15424-1 (2015)	√	Nil	NEQ
		CNS 15424-2 (2015)		Nil	NEQ
		CNS 15387 (2015)		Nil	NEQ
Secondary lithium batteries for electrical assisted bicycles use	ditto	CNS 15424-1 (2015)	√	Nil	NEQ
		CNS 15424-2 (2015)		Nil	NEQ
		CNS 15387 (2015)		Nil	NEQ
Static converters for automatic data processing machines and units thereof, and telecommunication apparatus (inspection scope: only adapters convertible from AC to DC, excluding those designed	ditto	CNS 13438 (2006)	√	CISPR 22	IDT
		CNS 14336-1 (2010) or CNS 14408 (2003)		IEC 60950 IEC 60065	MOD MOD
		Section 5 "Marking of presence" of CNS 15663 (2013)		Nil	NEQ

Product	Regulations	Standards			
		Domestic Standards	Please tick box if mandatory	Relevant International Standards	Extent of Alignment
for HI END audio)					
Static converters for automatic data processing machines and units thereof, and telecommunication apparatus (inspection scope: chargers for electrical motorcycles)	ditto	CNS 15425-1 (2015)	√	Nil	NEQ
		CNS 13438 (2006)		CISPR 22	IDT
		Section 5 "Marking of presence" of CNS 15663 (2013)		Nil	NEQ
Other power supply, exchangeable type (inspection scope: only adapters convertible from AC to DC, excluding those designed for HI END audio)	ditto	CNS 13438 (2006)	√	CISPR 22	IDT
		CNS 14336-1 (2010) or CNS 14408 (2003)	√	IEC 60950 IEC 60065	MOD MOD
		Section 5 "Marking of presence" of CNS 15663 (2013)	√	Nil	NEQ
Other power supply, exchangeable type (inspection scope: chargers for electrical motorcycles)	ditto	CNS 15425-1 (2015)	√	Nil	NEQ
		CNS 13438 (2006)		CISPR 22	IDT
		Section 5 "Marking of presence" of CNS 15663 (2013)		Nil	NEQ

Product	Regulations	Standards			
		Domestic Standards	Please tick box if mandatory	Relevant International Standards	Extent of Alignment
Automatic data processing machines (inspection scope: excluding wireless telecommunication terminal equipment operating under mobile service providers)	ditto	CNS 13438 (2006)	√	CISPR 22	IDT
		CNS 14336-1 (2010)		IEC 60950	MOD
		Section 5 "Marking of presence" of CNS 15663 (2013)		Nil	NEQ
Printing or copying machines (including those with facsimile or scanning function, and for printing labels, barcodes, receipts, numbers, photographs, and bankbooks)	Commodity Inspection Act	CNS 13438 (2006)	√	CISPR 22	IDT
		CNS 14336-1 (2010)		IEC 60950	MOD
		Section 5 "Marking of presence" of CNS 15663 (2013)		Nil	NEQ
Radio Keyboard	ditto	CNS 13438 (2006)	√	CISPR 22	IDT
		CNS 14336-1 (2010)		IEC 60950	MOD
		Section 5 "Marking of presence" of CNS 15663 (2013)		Nil	NEQ
Image scanners	ditto	CNS 13438 (2006)	√	CISPR 22	IDT
		CNS 14336-1 (2010)		IEC 60950	MOD

Product	Regulations	Standards			
		Domestic Standards	Please tick box if mandatory	Relevant International Standards	Extent of Alignment
		Section 5 "Marking of presence" of CNS 15663 (2013)		Nil	NEQ
Radio Mouse	ditto	CNS 13438 (2006)	√	CISPR 22	IDT
		CNS 14336-1 (2010)		IEC 60950	MOD
		Section 5 "Marking of presence" of CNS 15663 (2013)		Nil	NEQ
Monitors for automatic data processing system	ditto	CNS 13438 (2006)	√	CISPR 22	IDT
		CNS 14336-1 (2010)		IEC 60950	MOD
		Section 5 "Marking of presence" of CNS 15663 (2013)		Nil	NEQ
Monitors used in an automatic data processing (inspection scope : including head-mounted monitors)	ditto	CNS 13438 (2006)	√	CISPR 22	IDT
		CNS 14336-1 (2010)		IEC 60950	MOD
		Section 5 "Marking of presence" of CNS 15663 (2013)		Nil	NEQ
Other input or output units, whether or not	ditto	CNS 13438 (2006)	√	CISPR 22	IDT
		CNS 14336-1 (2010)		IEC 60950	MOD

Product	Regulations	Standards			
		Domestic Standards	Please tick box if mandatory	Relevant International Standards	Extent of Alignment
presented with the rest of a system and whether or not containing storage units in the same housing		Section 5 "Marking of presence" of CNS 15663 (2013)		Nil	NEQ
Automatic teller machines	ditto	CNS 13438 (2006)	√	CISPR 22	IDT
		CNS 14336-1 (2010)		IEC 60950	MOD
		Section 5 "Marking of presence" of CNS 15663 (2013)		Nil	NEQ
Navigation apparatus (inspection scope: excluding those for marine or for aviation)	ditto	CNS 13439 (2004) (Multimedia products may choose CNS 13438 (2006))	√	CISPR 13	IDT
		CNS 14408 (2004) (Multimedia products may choose CNS 14336-1 (2010))		IEC 60065	MOD
		Section 5 "Marking of presence" of CNS 15663 (2013)		Nil	NEQ
Other uninterruptible power supply, having a power handling capacity not exceeding 10KVA	ditto	CNS 14757-2 (2010)	√	IEC 62040-2	IDT
		CNS 14843-1 (2004) or CNS 14843-2 (2004)		IEC 62040-1-1 or IEC 62040-1-2	MOD

Product	Regulations	Standards			
		Domestic Standards	Please tick box if mandatory	Relevant International Standards	Extent of Alignment
		Section 5 "Marking of presence" of CNS 15663 (2013)		Nil	NEQ
Other uninterruptible power supply (except for those output current more than 400A)	ditto	CNS 14757-2 (2010)	√	IEC 62040-2	IDT
		CNS 14843-1 (2004) or CNS 14843-2 (2004)		IEC 62040-1-1 or IEC 62040-1-2	MOD MOD
		Section 5 "Marking of presence" of CNS 15663 (2013)		Nil	NEQ
		CNS 15424-2 (2015)		Nil	NEQ
		CNS 15387 (2015)		Nil	NEQ
Drafting tables and machines fitted with data processing system, whether or not automatic	ditto	CNS 13438 (2006)	√	CISPR 22	IDT
		CNS 14336-1 (2010)		IEC 60950	MOD
		Section 5 "Marking of presence" of CNS 15663 (2013)		Nil	NEQ
Drafting machines for data processing system	ditto	CNS 13438 (2006)	√	CISPR 22	IDT
		CNS 14336-1 (2010)		IEC 60950	MOD

Product	Regulations	Standards			
		Domestic Standards	Please tick box if mandatory	Relevant International Standards	Extent of Alignment
		Section 5 "Marking of presence" of CNS 15663 (2013)		Nil	NEQ
Single loudspeakers, mounted in their enclosures (inspection scope: with built-in amplifier, excluding those only using DC power and HI-END audio)	ditto	CNS 14408 (2004)	√	IEC 60065	MOD
		CNS13439 (2004)		CISPR 13	IDT
		Section 5 "Marking of presence" of CNS 15663 (2013)		Nil	NEQ
Single loudspeakers, mounted in their enclosures (inspection scope: with built-in amplifier, DC power only)	ditto	CNS13439 (2004)	√	CISPR 13	IDT
		Section 5 "Marking of presence" of CNS 15663 (2013)		Nil	NEQ
Single loudspeakers, mounted in their enclosures (inspection scope: with built-in amplifier, excluding those only using DC power and HI-END audio)	ditto	CNS 14408 (2004)	√	IEC 60065	MOD
		CNS13439 (2004)		CISPR 13	IDT
		Section 5 "Marking of presence" of CNS 15663 (2013)		Nil	NEQ
Multiple loudspeakers, mounted in their	ditto	CNS 14408 (2004)	√	IEC 60065	MOD
		CNS13439 (2004)		CISPR 13	IDT

Product	Regulations	Standards			
		Domestic Standards	Please tick box if mandatory	Relevant International Standards	Extent of Alignment
enclosures (inspection scope: with built-in amplifier, excluding those only using DC power and HI-END audio)		Section 5 "Marking of presence" of CNS 15663 (2013)		Nil	NEQ
Multiple loudspeakers, mounted in their enclosures (inspection scope: with built-in amplifier, those only DC power)	ditto	CNS13439 (2004)	√	CISPR 13	IDT
		Section 5 "Marking of presence" of CNS 15663 (2013)		Nil	NEQ
Other audio-frequency electric amplifier (inspection scope: excluding those using HI-END audio)	ditto	CNS 14408 (2004)	√	IEC 60065	MOD
		CNS13439 (2004)		CISPR 13	IDT
		Section 5 "Marking of presence" of CNS 15663 (2013)		Nil	NEQ
Other electric sound amplifier sets (inspection scope: excluding those only using DC power and HI-END audio)	ditto	CNS 14408 (2004)	√	IEC 60065	MOD
		CNS13439 (2004)		CISPR 13	IDT
		Section 5 "Marking of presence" of CNS 15663 (2013)		Nil	NEQ
Other electric sound amplifier sets (inspection scope: those only DC power)	ditto	CNS13439 (2004)	√	CISPR 13	IDT
		Section 5 "Marking of presence" of CNS 15663 (2013)		Nil	NEQ
Record-players operated	ditto	CNS 14408 (2004)	√	IEC 60065	MOD

Product	Regulations	Standards			
		Domestic Standards	Please tick box if mandatory	Relevant International Standards	Extent of Alignment
by coins, banknotes, bank cards, tokens or by other means of payment (inspection scope: excluding those only DC power)		CNS13439 (2004)		CISPR 13	IDT
		Section 5 "Marking of presence" of CNS 15663 (2013)		Nil	NEQ
Record-players operated by coins, banknotes, bank cards, tokens or by other means of payment (inspection scope: those only DC power)	ditto	CNS13439 (2004)	√	CISPR 13	IDT
		Section 5 "Marking of presence" of CNS 15663 (2013)		Nil	NEQ
Magnetic audio disc player operated by coins, banknotes, bank cards, tokens or by other means of payment (inspection scope: excluding those only DC power or HI-END audio)	ditto	CNS 14408 (2004)	√	IEC 60065	MOD
		CNS13439 (2004)		CISPR 13	IDT
		Section 5 "Marking of presence" of CNS 15663 (2013)		Nil	NEQ
Magnetic audio disc player operated by coins, banknotes, bank cards, tokens or by other means of payment (inspection scope: those only DC power)	ditto	CNS13439 (2004)	√	CISPR 13	IDT
		Section 5 "Marking of presence" of CNS 15663 (2013)		Nil	NEQ

Product	Regulations	Standards			
		Domestic Standards	Please tick box if mandatory	Relevant International Standards	Extent of Alignment
Other sound recording or reproducing apparatus operated by coins, banknotes, bank cards, tokens or by other means of payment (inspection scope: excluding those only both DC power and HI-END audio)	ditto	CNS 14408 (2004)	√	IEC 60065	MOD
		CNS13439 (2004)		CISPR 13	IDT
		Section 5 "Marking of presence" of CNS 15663 (2013)		Nil	NEQ
Other sound recording or reproducing apparatus operated by coins, banknotes, bank cards, tokens or by other means of payment (inspection scope: those only DC power)	ditto	CNS13439 (2004)	√	CISPR 13	IDT
		Section 5 "Marking of presence" of CNS 15663 (2013)		Nil	NEQ
Sound recording or reproducing apparatus for using magnetic, optical or semiconductor media (inspection scope: excluding those only both DC power and HI-END audio)	ditto	CNS 14408 (2004)	√	IEC 60065	MOD
		CNS13439 (2004)		CISPR 13	IDT
		Section 5 "Marking of presence" of CNS 15663 (2013)		Nil	NEQ
Sound recording or reproducing apparatus for using magnetic, optical or semiconductor media	ditto	CNS13439 (2004)	√	CISPR 13	IDT
		Section 5 "Marking of presence" of CNS 15663 (2013)		Nil	NEQ

Product	Regulations	Standards			
		Domestic Standards	Please tick box if mandatory	Relevant International Standards	Extent of Alignment
(inspection scope: those only DC power)					
Other sound recording or reproducing apparatus (inspection scope: excluding those only both DC power and HI-END audio)	ditto	CNS 14408 (2004)	√	IEC 60065	MOD
		CNS13439 (2004)		CISPR 13	IDT
		Section 5 “Marking of presence” of CNS 15663 (2013)		Nil	NEQ
Other sound recording or reproducing apparatus (inspection scope: those only DC power)	ditto	CNS13439 (2004)	√	CISPR 13	IDT
		Section 5 “Marking of presence” of CNS 15663 (2013)		Nil	NEQ
Laser-optical video disc recorder/player or player (inspection scope: excluding those only DC power)	ditto	CNS 13439 (2004) (Multimedia products may choose CNS 13438 (2006))	√	CISPR 13	IDT
		CNS 14408 (2004) (Multimedia products may choose CNS 14336-1 (2010))		IEC 60065	MOD
		Section 5 “Marking of presence” of CNS 15663 (2013)		Nil	NEQ
Laser-optical video disc recorder/player or player (inspection scope: those only using DC power and monitor)	ditto	CNS 13439 (2004) (Multimedia products may choose CNS 13438 (2006))	√	CISPR 13	IDT
		CNS 14408 (2004) (Multimedia products may		IEC 60065	MOD

Product	Regulations	Standards			
		Domestic Standards	Please tick box if mandatory	Relevant International Standards	Extent of Alignment
		choose CNS 14336-1 (2010))			
		Section 5 "Marking of presence" of CNS 15663 (2013)		Nil	NEQ
Laser-optical video disc recorder/player or player (inspection scope: those only using DC power and without monitor)	ditto	CNS 13439 (2004) (Multimedia products may choose CNS 13438 (2006))	√	CISPR 13	IDT
		CNS 14408 (2004) (Multimedia products may choose CNS 14336-1 (2010))		IEC 60065	MOD
		Section 5 "Marking of presence" of CNS 15663 (2013)		Nil	NEQ
Digital record hard disk type video recorder/player or video player, with BNC connector which can connect out with RS 232, RS422 or GPI interface	ditto	CNS 13439 (2004) (Multimedia products may choose CNS 13438 (2006))	√	CISPR 13	IDT
		CNS 14408 (2004) (Multimedia products may choose CNS 14336-1 (2010))		IEC 60065	MOD
		Section 5 "Marking of presence" of CNS 15663 (2013)		Nil	NEQ
Other video recording or reproducing apparatus	ditto	CNS 13439 (2004) (Multimedia products may choose CNS 13438 (2006))	√	CISPR 13	IDT

Product	Regulations	Standards			
		Domestic Standards	Please tick box if mandatory	Relevant International Standards	Extent of Alignment
		CNS 14408 (2004) (Multimedia products may choose CNS 14336-1 (2010))		IEC 60065	MOD
		Section 5 "Marking of presence" of CNS 15663 (2013)		Nil	NEQ
Automotive video cameras	ditto	CNS13438 (2006)	√	CISPR 11	IDT
		Section 5 "Marking of presence" of CNS 15663 (2013)		Nil	NEQ
Other radio-broadcast receivers capable of operating without an external source of power, combines with sound recording or reproducing apparatus	ditto	CNS13439 (2004)	√	CISPR 13	IDT
		Section 5 "Marking of presence" of CNS 15663 (2013)		Nil	NEQ
Radio-broadcast receivers capable of operating without an external source of power, not combined with sound recording or reproducing apparatus	ditto	CNS13439 (2004)	√	CISPR 13	IDT
		Section 5 "Marking of presence" of CNS 15663 (2013)		Nil	NEQ

Product	Regulations	Standards			
		Domestic Standards	Please tick box if mandatory	Relevant International Standards	Extent of Alignment
Radio-broadcast receivers not capable of operating without an external source of power, of a kind used in motor vehicles, combined with sound recording or reproducing apparatus capable of receiving and decoding digital radio data system signals	ditto	CNS13439 (2004)	√	CISPR 13	IDT
		Section 5 "Marking of presence" of CNS 15663 (2013)		Nil	NEQ
Other radio-broadcast receivers not capable of operating without an external source of power, of a kind used in motor vehicles, combined with sound recording or reproducing apparatus	ditto	CNS13439 (2004)	√	CISPR 13	IDT
		Section 5 "Marking of presence" of CNS 15663 (2013)		Nil	NEQ
Radio-broadcast receivers not capable of operating without an external source of power, of a kind used in motor vehicles, not combined with sound recording or reproducing apparatus	ditto	CNS13439 (2004)	√	CISPR 13	IDT
		Section 5 "Marking of presence" of CNS 15663 (2013)		Nil	NEQ

Product	Regulations	Standards			
		Domestic Standards	Please tick box if mandatory	Relevant International Standards	Extent of Alignment
Other radio-broadcast receivers combined with sound recording or reproducing apparatus (inspection scope: excluding those only both DC power and HI-END audio)	ditto	CNS 14408 (2004)	√	IEC 60065	MOD
		CNS13439 (2004)		CISPR 13	IDT
		Section 5 "Marking of presence" of CNS 15663 (2013)		Nil	NEQ
Other radio-broadcast receivers combined with sound recording or reproducing apparatus (inspection scope: those only DC power)	ditto	CNS13439 (2004)	√	CISPR 13	IDT
		Section 5 "Marking of presence" of CNS 15663 (2013)		Nil	NEQ
Other radio-broadcast receivers, not combined with sound recording or reproducing apparatus but combined with a clock (inspection scope: excluding those only DC power)	ditto	CNS 14408 (2004)	√	IEC 60065	MOD
		CNS13439 (2004)		CISPR 13	IDT
		Section 5 "Marking of presence" of CNS 15663 (2013)		Nil	NEQ
Other radio-broadcast receivers, not combined with sound recording or reproducing apparatus but combined with a clock (inspection scope: those only DC power)	ditto	CNS13439 (2004)	√	CISPR 13	IDT
		Section 5 "Marking of presence" of CNS 15663 (2013)		Nil	NEQ

Product	Regulations	Standards			
		Domestic Standards	Please tick box if mandatory	Relevant International Standards	Extent of Alignment
Other radio-broadcast receivers (inspection scope: excluding those only both DC power and HI-END audio)	ditto	CNS 14408 (2004)	√	IEC 60065	MOD
		CNS13439 (2004)		CISPR 13	IDT
		Section 5 “Marking of presence” of CNS 15663 (2013)		Nil	NEQ
Other radio-broadcast receivers (inspection scope: those only DC power)	ditto	CNS13439 (2004)	√	CISPR 13	IDT
		Section 5 “Marking of presence” of CNS 15663 (2013)		Nil	NEQ
Projectors	ditto	CNS 13439 (2004) (Multimedia products may choose CNS 13438 (2006))	√	CISPR 13	IDT
		CNS 14408 (2004) (Multimedia products may choose CNS 14336-1 (2010))		IEC 60065	MOD
		Section 5 “Marking of presence” of CNS 15663 (2013)		Nil	NEQ
Video tuners (inspection scope: having digital terrestrial television reception capability. excluding those for only	ditto	CNS 13439 (2004)	√	CISPR 13	IDT
		CNS 14408 (2004)		IEC 60065	MOD

Product	Regulations	Standards			
		Domestic Standards	Please tick box if mandatory	Relevant International Standards	Extent of Alignment
vehicle use or computer use)		“Technical Specification for Digital Terrestrial Television Receivers”(Adopted on 29 August, 2011)		Nil	NEQ
		Section 5 “Marking of presence” of CNS 15663 (2013)		Nil	NEQ
Network media players	ditto	CNS 13439 (2004) (Multimedia products may choose CNS 13438 (2006))	√	CISPR 13	IDT
		CNS 14408 (2004) (Multimedia products may choose CNS 14336-1 (2010))		IEC 60065	MOD
		Section 5 “Marking of presence” of CNS 15663 (2013)		Nil	NEQ
Set top boxes which have a communication function, with a	ditto	CNS 13439 (2004)	√	CISPR 13	IDT

Product	Regulations	Standards			
		Domestic Standards	Please tick box if mandatory	Relevant International Standards	Extent of Alignment
microprocessor-based device incorporating a built-in or external modem for gaining access to the Internet, and having a function of interactive information exchange and which also have a function to receive television signals (inspection scope: having digital terrestrial television reception capability with external modem for gaining access to the Internet, excluding those for only Vehicle use or computer use)		CNS 14408 (2004)		IEC 60065	MOD
		“Technical Specification for Digital Terrestrial Television Receivers”(Adopted on 29 August, 2011)		Nil	NEQ
		Section 5 “Marking of presence” of CNS 15663 (2013)		Nil	NEQ
Televisions	ditto	CNS 13439 (2004) (Multimedia products may choose CNS 13438 (2006))	√	CISPR 13	IDT
		CNS 14408 (2004) (Multimedia products may choose CNS 14336-1 (2010))		IEC 60065	MOD
		Technical Specification for Digital Terrestrial Television Receivers (2011.8)		Nil	NEQ

Product	Regulations	Standards			
		Domestic Standards	Please tick box if mandatory	Relevant International Standards	Extent of Alignment
		Section 5 “Marking of presence” of CNS 15663 (2013)		Nil	NEQ
Monitors	ditto	CNS 13439 (2004) (Multimedia products may choose CNS 13438 (2006))	√	CISPR 13	IDT
		CNS 14408 (2004) (Multimedia products may choose CNS 14336-1 (2010))		IEC 60065	MOD
		Section 5 “Marking of presence” of CNS 15663 (2013)		Nil	NEQ
		Section 5 “Marking of presence” of CNS 15663 (2013)		Nil	NEQ
Monitors (including head-mounted monitors)	ditto	CNS 13439 (2004) (Multimedia products may choose CNS 13438 (2006))	√	CISPR 13	IDT
		CNS 14408 (2004) (Multimedia products may choose CNS 14336-1 (2010))		IEC 60065	MOD
		Section 5 “Marking of presence” of CNS 15663 (2013)		Nil	NEQ
		Section 5 “Marking of presence” of CNS 15663		Nil	NEQ

Product	Regulations	Standards			
		Domestic Standards	Please tick box if mandatory	Relevant International Standards	Extent of Alignment
		(2013)			
Other electrical machines and apparatus (inspection scope: Language learning machine, excluding those only DC power)	ditto	CNS 14408 (2004)	√	IEC 60065	MOD
		CNS 13439 (2004)		CISPR 13	IDT
		Section 5 "Marking of presence" of CNS 15663 (2013)		Nil	NEQ
Other office machines of heading 84.72 (inspection scope: only Single phase AC, below 300V; not exceeding 500W; only document shredding machine)	ditto	CNS 13783-1 (2004)	√	CISPR 14-1	IDT
		CNS 14336-1 (2010)		IEC 60950	MOD
		Section 5 "Marking of presence" of CNS 15663 (2013)		Nil	NEQ
Other office machines of heading 84.72 (inspection scope: only DC, below 300V; not exceeding 500W; only document shredding machine)	ditto	CNS 13783-1 (2004)	√	CISPR 14-1	IDT
		Section 5 "Marking of presence" of CNS 15663 (2013)		Nil	NEQ
Pencil-sharpening machines (inspection scope: only single phase not exceeding 300V, excluding rechargeable type)	ditto	CNS 14336-1 (2010)	√	IEC 60950	MOD
		CNS 13783-1 (2004)		CISPR14-1	IDT
		Section 5 "Marking of presence" of CNS 15663 (2013)		Nil	NEQ

Product	Regulations	Standards			
		Domestic Standards	Please tick box if mandatory	Relevant International Standards	Extent of Alignment
Laser pointers	ditto	CNS 15527 section 3.1.3 and 5 (2018)	√	Nil	NEQ
		CNS 15016-1 (2014)		IEC 60825-1	IDT

3. Products covered by supplier declarations (DoC Scheme)

Product	Regulations	Standards			
		Domestic Standards	Please tick box if mandatory	Relevant International Standards	Extent of Alignment
Word-processing machines	Commodity Inspection Act	CNS 13438 (2006) CNS 14336-1 (2010) Section 5 "Marking of presence" of CNS 15663 (2013)	√	CISPR22 IEC 60950 Nil	IDT MOD NEQ
Typewriters other than printers of heading 84.43	ditto	CNS 13438 (2006) CNS 14336-1 (2010) Section 5 "Marking of presence" of CNS 15663 (2013)	√	CISPR22 IEC 60950 Nil	IDT MOD NEQ
Other machines of heading No.84.70	ditto	CNS 13438 (2006) CNS 14336-1 (2010) Section 5 "Marking of presence" of CNS 15663 (2013)	√	CISPR22 IEC 60950 Nil	IDT MOD NEQ
Cash registers	ditto	CNS 13438 (2006)	√	CISPR22	IDT

Product	Regulations	Standards			
		Domestic Standards	Please tick box if mandatory	Relevant International Standards	Extent of Alignment
		CNS 14336-1 (2010) Section 5 "Marking of presence" of CNS 15663 (2013)		IEC 60950 Nil	MOD NEQ
Data transcribing machines for inputting into data processing machines, such as card punch machines, verifying machines, magnetic tape encoders, etc.	ditto	CNS 13438 (2006) CNS 14336-1 (2010) Section 5 "Marking of presence" of CNS 15663 (2013)	√	CISPR22 IEC 60950 Nil	IDT MOD NEQ
Pocket-size data recording, reproducing and displaying machines with calculating functions (inspection scope: those only for power consumption more than 10nW)	ditto	CNS 13438 (2006) CNS 14336-1 (2010) Section 5 "Marking of presence" of CNS 15663 (2013)	√	CISPR22 IEC 60950 Nil	IDT MOD NEQ
Electric calculators capable of operation without an external source of electric power (inspection scope: those only for power consumption more than 10nW)	ditto	CNS13438 Section 5 "Marking of presence" of CNS 15663 (2013)	√	CISPR22 Nil	IDT NEQ
Electronic calculating machines, incorporating a printing device	ditto	CNS 13438 (2006) CNS 14336-1 (2010) Section 5 "Marking of	√	CISPR22 IEC 60950 Nil	IDT MOD NEQ

Product	Regulations	Standards			
		Domestic Standards	Please tick box if mandatory	Relevant International Standards	Extent of Alignment
		presence” of CNS 15663 (2013)			
Other electronic calculating machines	ditto	CNS 13438 (2006) CNS 14336-1 (2010) Section 5 “Marking of presence” of CNS 15663 (2013)	√	CISPR22 IEC 60950 Nil	IDT MOD NEQ
Other calculating machines	ditto	CNS 13438 (2006) CNS 14336-1 (2010) Section 5 “Marking of presence” of CNS 15663 (2013)	√	CISPR22 IEC 60950 Nil	IDT MOD NEQ
Other Keyboard	ditto	CNS 13438 (2006) CNS 14336-1 (2010) Section 5 “Marking of presence” of CNS 15663 (2013)	√	CISPR22 IEC 60950 Nil	IDT MOD NEQ
Hard disc devices (external type)	ditto	CNS 13438 (2006) CNS 14336-1 (2010) Section 5 “Marking of presence” of CNS 15663 (2013)	√	CISPR22 IEC 60950 Nil	IDT MOD NEQ
Hard disc devices <input type="checkbox"/> internal type <input type="checkbox"/>	ditto	CNS13438 Section 5 “Marking of presence” of CNS 15663 (2013)	√	CISPR22 Nil	IDT NEQ

Product	Regulations	Standards			
		Domestic Standards	Please tick box if mandatory	Relevant International Standards	Extent of Alignment
Soft disc devices (external type)	ditto	CNS 13438 (2006) CNS 14336-1 (2010) Section 5 "Marking of presence" of CNS 15663 (2013)	√	CISPR22 IEC 60950 Nil	IDT MOD NEQ
Soft disc devices <input type="checkbox"/> internal type <input type="checkbox"/>	ditto	CNS13438 Section 5 "Marking of presence" of CNS 15663 (2013)	√	CISPR22 Nil	IDT NEQ
Optical disc devices (external type)	ditto	CNS 13438 (2006) CNS 14336-1 (2010) Section 5 "Marking of presence" of CNS 15663 (2013)	√	CISPR22 IEC 60950 Nil	IDT MOD NEQ
Optical disc devices <input type="checkbox"/> internal type <input type="checkbox"/>	ditto	CNS13438 Section 5 "Marking of presence" of CNS 15663 (2013)	√	CISPR22 Nil	IDT NEQ
Other magnetic disc devices (external type)	ditto	CNS 13438 (2006) CNS 14336-1 (2010) Section 5 "Marking of presence" of CNS 15663 (2013)	√	CISPR22 IEC 60950 Nil	IDT MOD NEQ
Other magnetic disc devices <input type="checkbox"/> internal type <input type="checkbox"/>	ditto	CNS13438 Section 5 "Marking of presence" of CNS 15663	√	CISPR22 Nil	IDT NEQ

Product	Regulations	Standards			
		Domestic Standards	Please tick box if mandatory	Relevant International Standards	Extent of Alignment
		(2013)			
Other storage units (external type)	ditto	CNS 13438 (2006) CNS 14336-1 (2010) Section 5 "Marking of presence" of CNS 15663 (2013)	√	CISPR22 IEC 60950 Nil	IDT MOD NEQ
Other storage units <input type="checkbox"/> internal type <input type="checkbox"/>	ditto	CNS13438 Section 5 "Marking of presence" of CNS 15663 (2013)	√	CISPR22 Nil	IDT NEQ
Other units of automatic data processing machines	ditto	CNS 13438 (2006) CNS 14336-1 (2010) Section 5 "Marking of presence" of CNS 15663 (2013)	√	CISPR22 IEC 60950 Nil	IDT MOD NEQ
Magnetic or optical readers	ditto	CNS 13438 (2006) CNS 14336-1 (2010) Section 5 "Marking of presence" of CNS 15663 (2013)	√	CISPR22 IEC 60950 Nil	IDT MOD NEQ
Parts and accessories of the machines of heading 84.71 (inspection scope: only limited to Class B main board of computers and add-on cards with I/O port; except for Fax Card, Modem card, Fax/ Modem	ditto	CNS 13438 (2006) CNS 14336-1 (2010) Section 5 "Marking of presence" of CNS 15663 (2013)	√	CISPR22 IEC 60950 Nil	IDT MOD NEQ

Product	Regulations	Standards			
		Domestic Standards	Please tick box if mandatory	Relevant International Standards	Extent of Alignment
Card and other add-on card with communication function)					
Machines for the reception, conversion and transmission or regeneration of voice, images or other data, including switching and routing apparatus (inspection scope: only Router, Bridge, Switch, Hub)	ditto	CNS 13438 (2006) CNS 14336-1 (2010) Section 5 "Marking of presence" of CNS 15663 (2013)	√	CISPR22 IEC 60950 Nil	IDT MOD NEQ
Digital video camera (inspection scope : excluding automotive video camera)	ditto	CNS13438 Section 5 "Marking of presence" of CNS 15663 (2013)	√	CISPR22 Nil	IDT NEQ
Electrical machines with translation or dictionary functions	ditto	CNS 13438 (2006) CNS 14336-1 (2010) Section 5 "Marking of presence" of CNS 15663 (2013)	√	CISPR22 IEC 60950 Nil	IDT MOD NEQ
Turntables (record-decks) (inspection scope: excluding those only DC power or HI-END audio)	ditto	CNS13439 (2004) CNS 14408 (2004) Section 5 "Marking of presence" of CNS 15663 (2013)	√	CISPR 13 IEC 60065 Nil	IDT MOD NEQ

Product	Regulations	Standards			
		Domestic Standards	Please tick box if mandatory	Relevant International Standards	Extent of Alignment
Turntables (record-decks) (inspection scope: those only DC power)	ditto	CNS13439 (2004) Section 5 "Marking of presence" of CNS 15663 (2013)	√	CISPR 13 Nil	IDT NEQ
Magnetic tape-type video tape recorder/player, other than the articles of tariff no.85211011 for magnetic tapes of a width of 3/4 inch and over	ditto	CNS13439 (2004) CNS 14408 (2004) Section 5 "Marking of presence" of CNS 15663 (2013)	√	CISPR 13 IEC 60065 Nil	IDT MOD NEQ
Other magnetic tape-type video tape recorder/player	ditto	CNS13439 (2004) CNS 14408 (2004) Section 5 "Marking of presence" of CNS 15663 (2013)	√	CISPR 13 IEC 60065 Nil	IDT MOD NEQ
Magnetic tape-type video tape recorder/player, other than the articles of tariff no.85211021 for magnetic tapes of a width of 3/4 inch and over	ditto	CNS13439 (2004) CNS 14408 (2004) Section 5 "Marking of presence" of CNS 15663 (2013)	√	CISPR 13 IEC 60065 Nil	IDT MOD NEQ
Other magnetic tape-type video tape player	ditto	CNS13439 (2004) CNS 14408 (2004) Section 5 "Marking of presence" of CNS 15663 (2013)	√	CISPR 13 IEC 60065 Nil	IDT MOD NEQ
Digital still image video	ditto	CNS13438	√	CISPR22	IDT

Product	Regulations	Standards			
		Domestic Standards	Please tick box if mandatory	Relevant International Standards	Extent of Alignment
cameras and digital cameras, with radio function		Section 5 "Marking of presence" of CNS 15663 (2013)		Nil	NEQ
Digital still image video cameras and digital cameras	ditto	CNS13438 Section 5 "Marking of presence" of CNS 15663 (2013)	√	CISPR22 Nil	IDT NEQ
Pocket-size radio cassette-players	ditto	CNS13439 (2004) Section 5 "Marking of presence" of CNS 15663 (2013)	√	CISPR 13 Nil	IDT NEQ
Other electrical machines and apparatus (Language learning machine) (inspection scope: those only DC power)	ditto	CNS13439 (2004) Section 5 "Marking of presence" of CNS 15663 (2013)	√	CISPR 13 Nil	IDT NEQ

Mains Voltage, Frequency and Mains Plug Configuration

Country	Mains Voltage and Tolerance	Mains Frequency and Tolerance	Applicable Legislation	Mains Plug Configuration				Diagram of Mains Plug Configuration-
				Domestic Standard	Please tick box if mandatory	Relevant International Standard	Extent of Alignment	
Chinese Taipei	110V	60Hz	Commodity Inspection Act 2007	CNS690	√	No	No	
	220V	60Hz	Commodity Inspection Act 2007	CNS690	√	No	No	