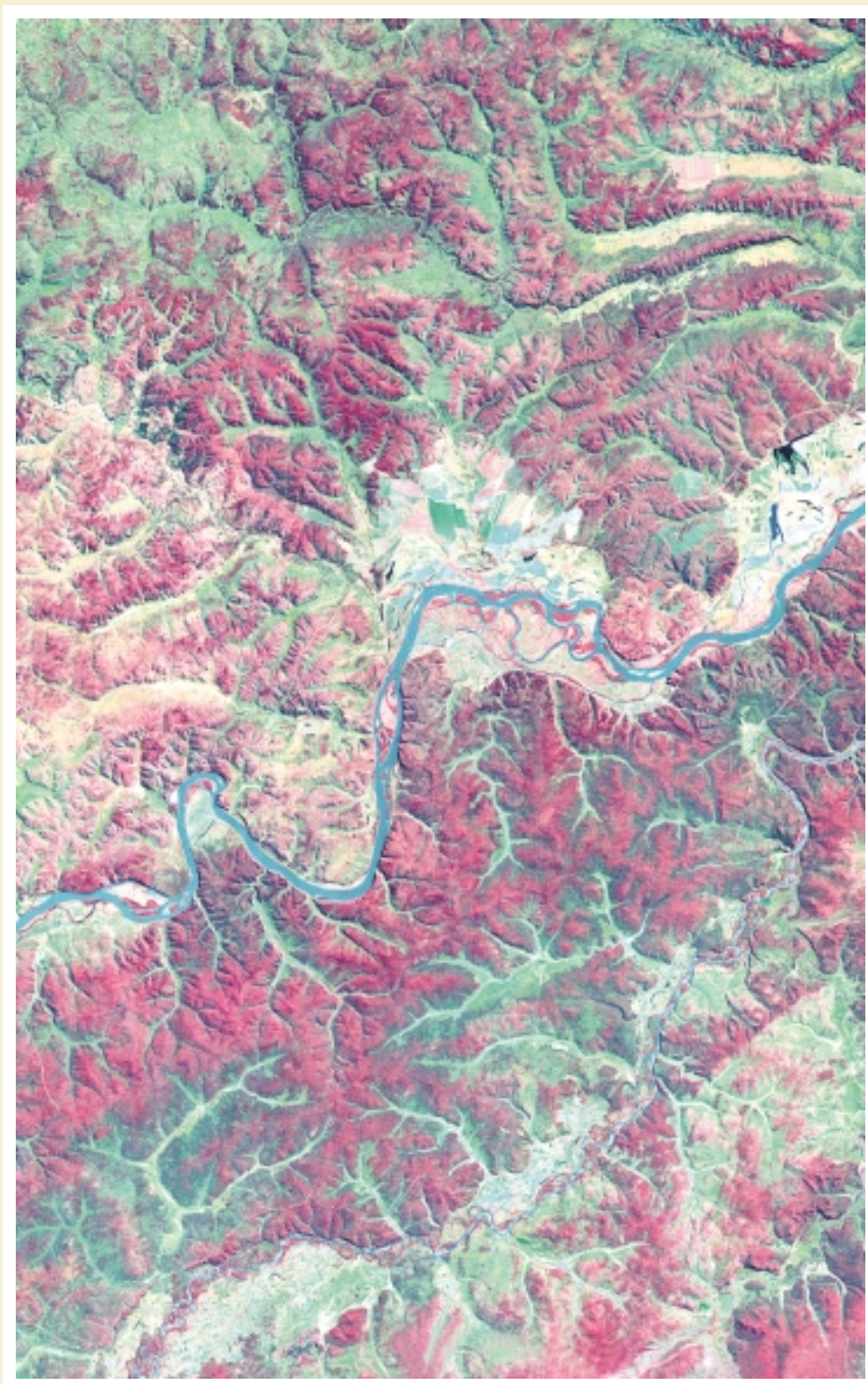


Images of damage by dahurian larch caterpillar in Heilongjiang Province





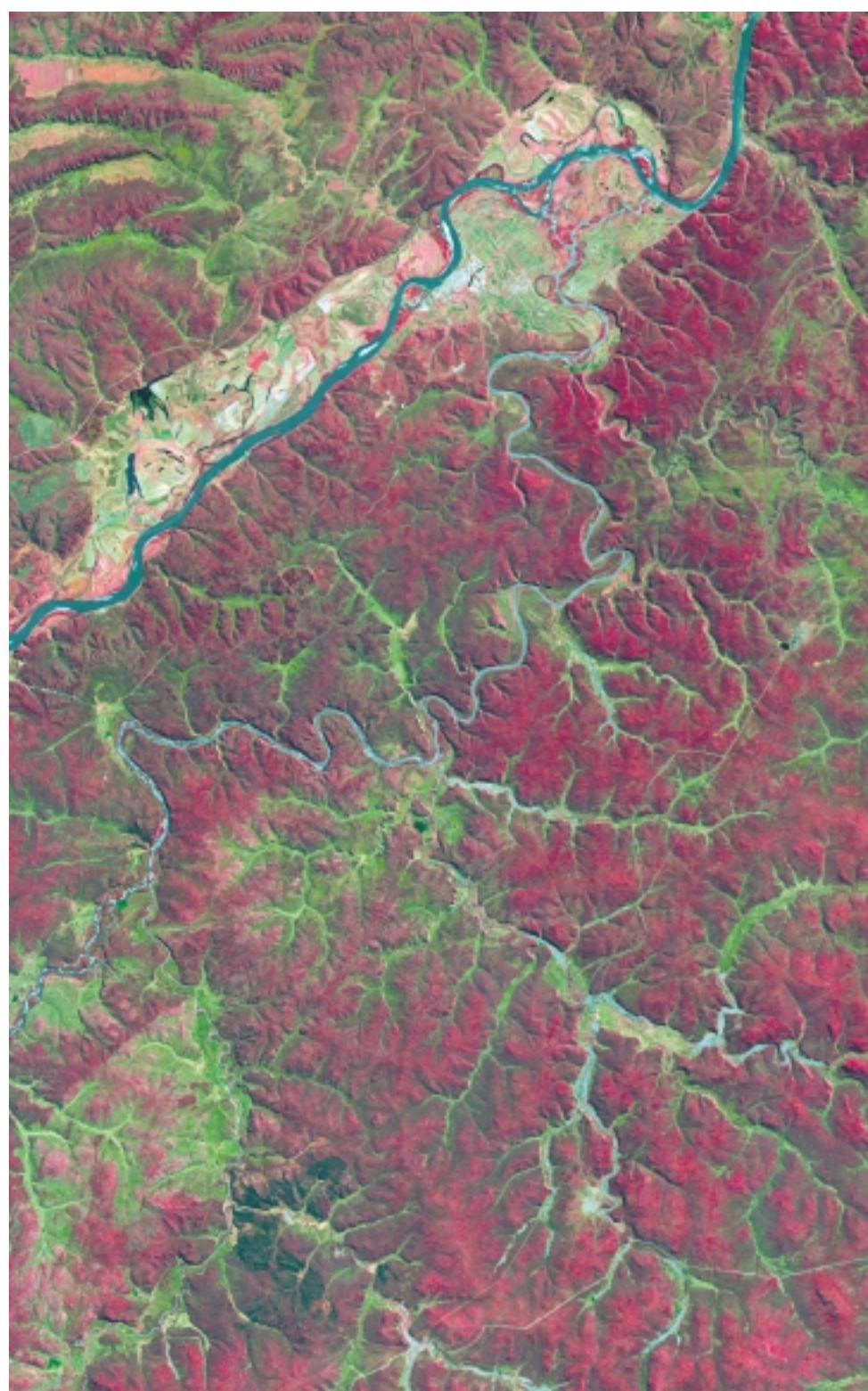
TM image in 1990



TM image in 1996



TM image in 1990



TM image in 1996



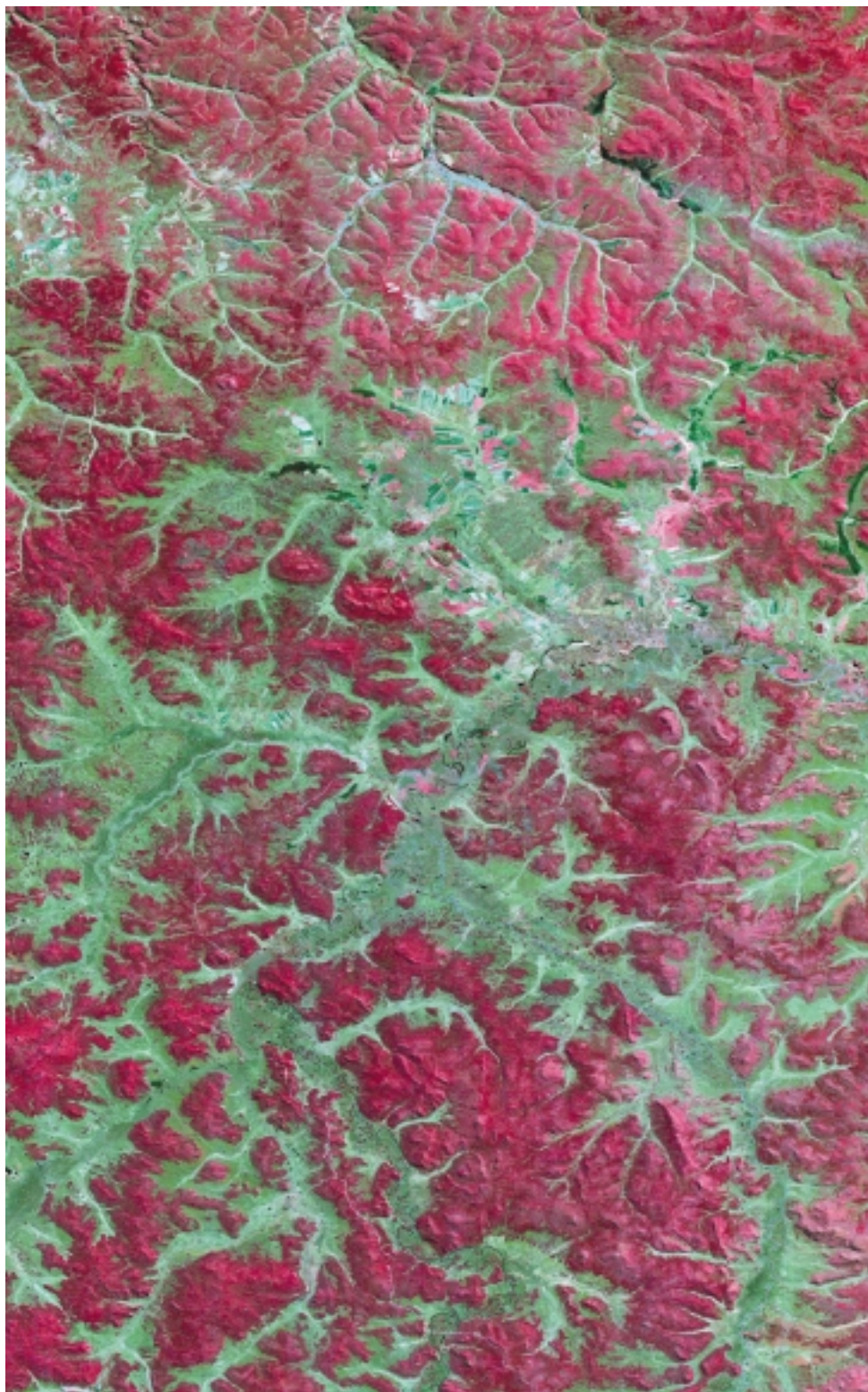
TM image in 1990



TM image in 1996



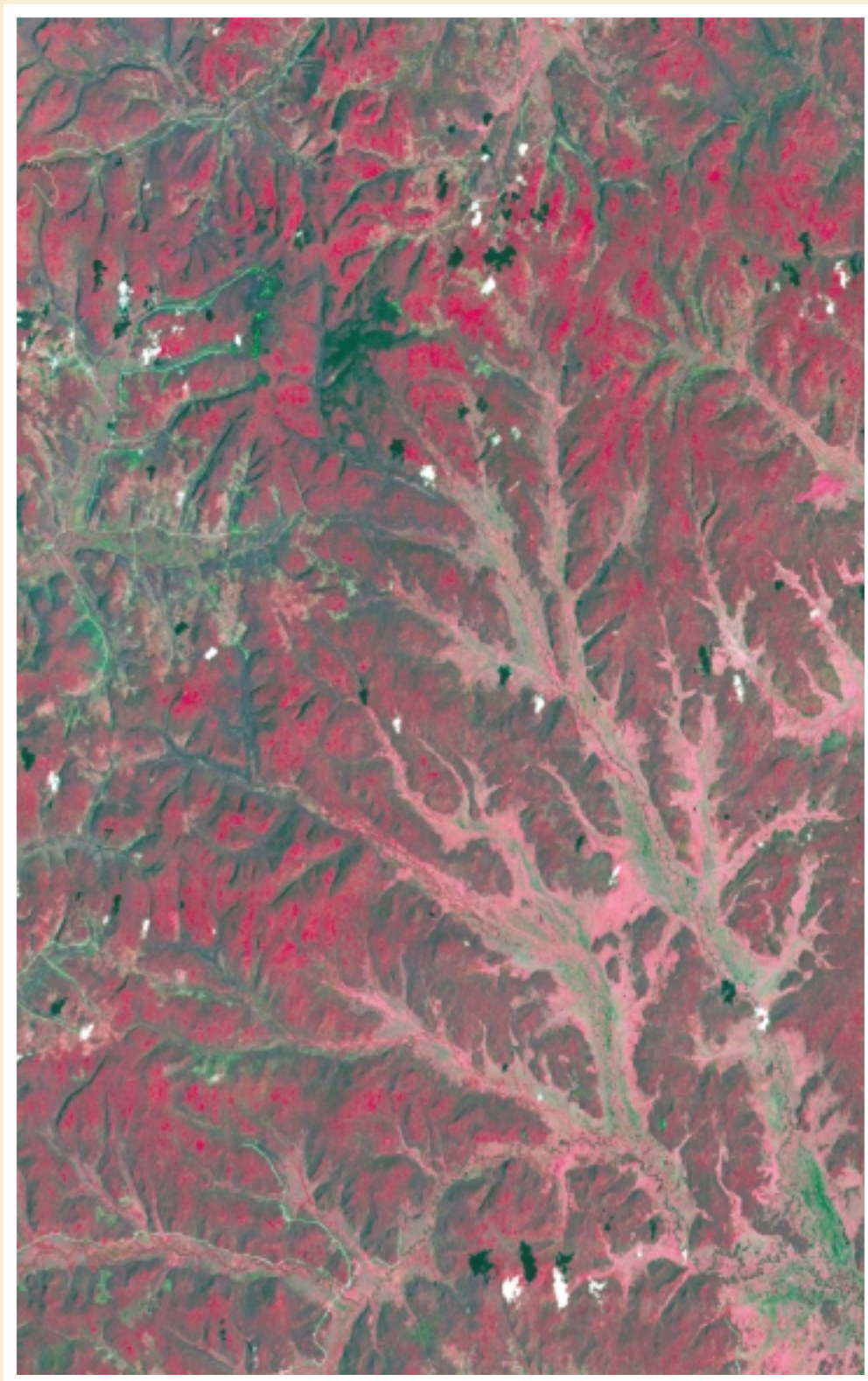
TM image in 1990



TM image in 1996



TM image in 1990



TM image in 1996

This group of images are situated at DaHingganling area of northeastern China, the center is about 124.6°E , 52.5°N . This area is the largest forested area of China with dahurian larch (*Larix gmelini*) as its dominant tree type, and dahurian larch caterpillar (*Dendrolimus superans*) is the main insect and disease type that intimidate forest health. In 1990, severe dahurian larch caterpillar (*Dendrolimus superans*) occurred in DaHingganling.

We choose five groups of images to analyze and compare the harm of dahurian larch caterpillar (*Dendrolimus superans*). In images of 1990, the green area represents the healthy forest, the deep purple and brown color represent the hazard area, the purple color represents bare land or area with no vegetation. In images of 1996, the red color represents healthy forest areas. By comparison between the two years, the hazard area can be seen clearly.