



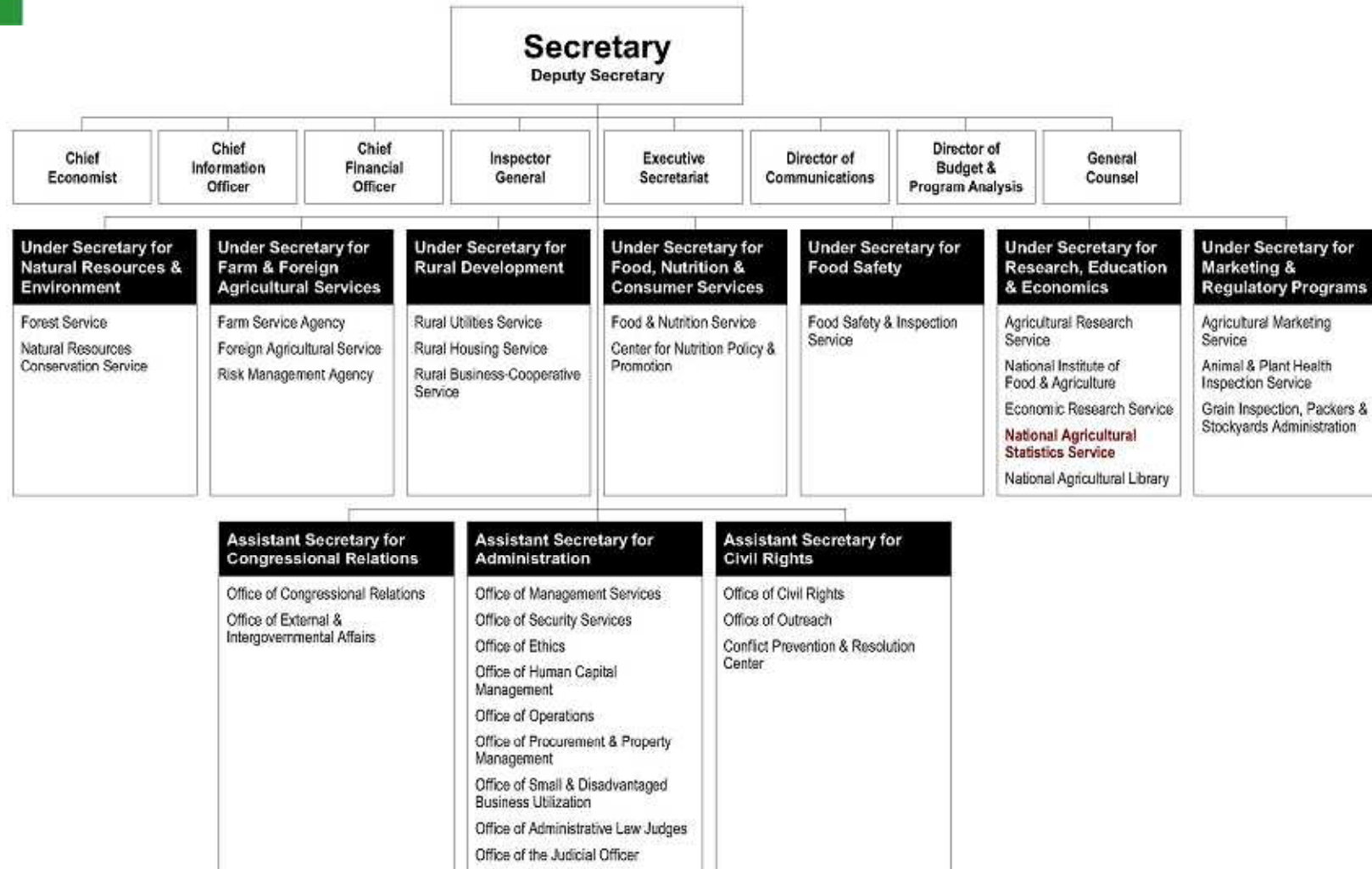
USDA's National Agricultural Statistics Service: Fact Finders for U.S. Agriculture

presented by
Theresa "Terry" Holland
National Agricultural Statistics Service
U.S. Department of Agriculture

APEC Workshop on Food Security
26 September 2012
Tokyo, Japan



United States Department of Agriculture



February 2010



Information System for U.S. Agriculture

Agricultural Marketing Service

quick market information on prices, supply & demand

National Agricultural Statistics Service

basic statistics on crops, livestock,
labor, chemical use, farm demographics, income & expenses

Economic Research Service

economic analysis for the U.S. agricultural sector



Information System for World Agriculture

World Agricultural Outlook Board

world supply & demand forecasts

Foreign Agricultural Service

data & analysis on foreign agriculture

Economic Research Service

economic analysis for the world agricultural sector



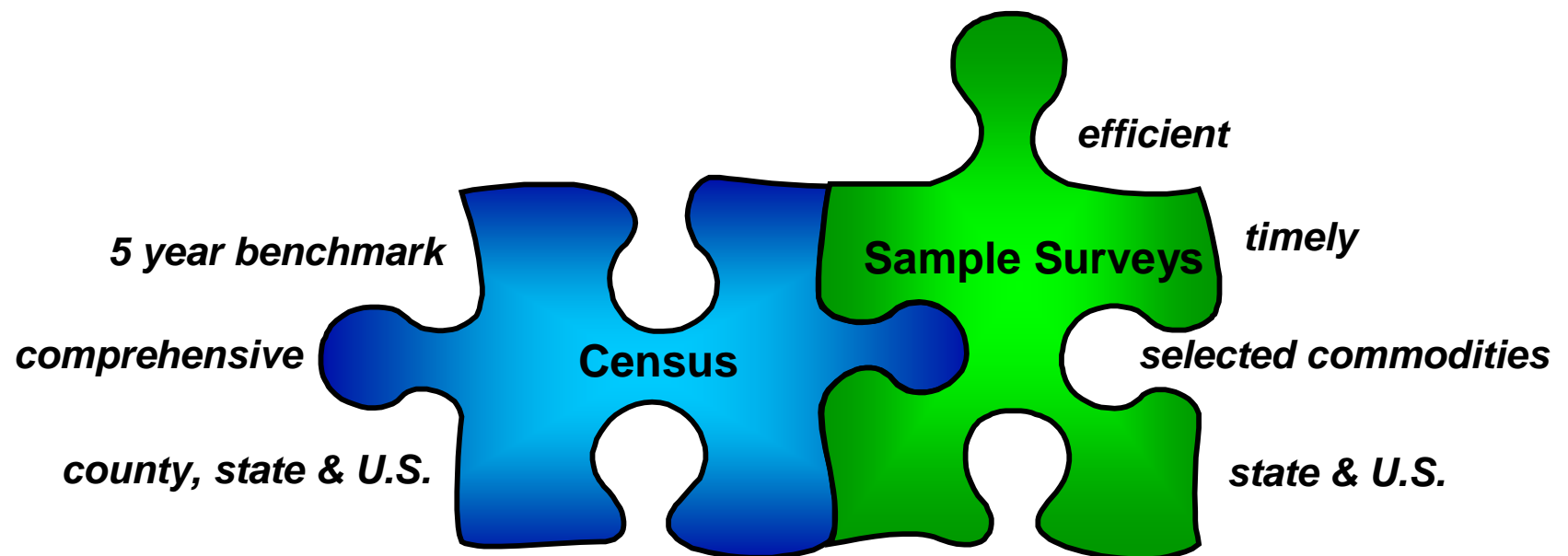
USDA's National Agricultural Statistics Service

- **Provides timely, accurate and useful statistics in service to U.S. agriculture**
 - Basic data on production and supplies of food and fiber, farm labor, agricultural chemical use, prices paid and received by farmers, farm finances, farm demographics
 - Statistical surveys of farms and agribusinesses to produce nearly 500 reports each year
 - Census of agriculture every 5 years to provide uniform, comprehensive statistics for every county
 - 46 field offices serving 50 states and Puerto Rico with cooperative relationships with State Departments of Agriculture and agricultural universities
- **Training and technical assistance to help other countries improve agricultural data systems**



U.S. Agricultural Statistics System

efficiently use limited resources
to satisfy needs of data users





U.S. Census of Agriculture

uniform, comprehensive statistics
on farms & farm productivity
for every county in the U.S.
every 5 years



U.S. Census of Agriculture

all farms

total area & land use
irrigation
land in government programs
field & forage crops
fruits, nuts & berries
vegetables & melons
horticultural specialties

livestock & poultry
animal specialties
aquaculture
production contracts
gross value of sales
direct sales to consumers

government loans
government program payments
farm-related income
grain storage capacity
operator characteristics
farm organization

fertilizer & chemical use
farm production expenses
inventory & value of machinery & equipment
market value of land & buildings
farm labor

~ years ending in “2” & “7” ~

inventories as of December 31 ~ production, sales & other information for calendar year



U.S. Census of Agriculture follow-on surveys

additional information
on specialized farm activities
using census responses
as basis for sampling



U.S. Census of Agriculture Follow-on Surveys

2007 Census of Agriculture

2008 Farm & Ranch Irrigation Survey

2008 Organic Production Survey

2009 Census of Horticultural Specialties

2009 On-Farm Renewable Energy Production Survey

2002 Census of Agriculture

2003 Farm & Ranch Irrigation Survey

2005 Census of Aquaculture

1997 Census of Agriculture

1998 Farm & Ranch Irrigation Survey

1998 Census of Aquaculture

1998 Census of Horticultural Specialties

1999 Agricultural Economics & Land Ownership Survey



on-going sample survey program

weekly, monthly, quarterly & annual reports

basic statistics on
crops, livestock, farm labor, chemical use,
farm demographics, income & expenses

Ongoing Agricultural Statistics Program



2012 Agricultural Statistics Board Calendar



	Monday	Tuesday	Wednesday	Thursday	Friday	Monday	Tuesday	Wednesday	Thursday	Friday	
January	1 HOLIDAY	2 Dairy Products	3 Broiler Hatchery	4	5 Dairy Products Prices Peanut Prices	7 Crop Program	8 Dairy Products	9 HOLIDAY	10 Broiler Hatchery	11 New Nonlinear Traits and Non- Ann. Peanut Prices	July
	6	9	11 Broiler Hatchery	12 Cotton Ginnings Crop Production - Ann Grain Stocks Rice Stocks Wheat Wheat Seedlings	13 Dairy Products Prices Peanut Prices Turkey Hatchery	9 Crop Program	10	11 Crop Production Broiler Hatchery	12	13 Peanut Prices	
	10 HOLIDAY	17	18 Broiler Hatchery	19 N. American Potatoes	20 Dairy Products Prices Livestock Statistics Cattle Processing Cattle on Foot Cattle on Feed Peanut Prices	18 Turkey Hatchery Crop Program	17	19 Broiler Hatchery	20 Milk Production	21 Livestock Slaughter Cattle Processing Cattle on Foot Cattle on Feed Cold Storage Herd Size	
	23 Chickens and Eggs Milk Production	24	25 Cotton Ginnings Poultry Slaughter Broiler Hatchery	26 Capacity of Refrigerated Warehouses Vegetables - Ann	27 Dairy Products Prices Cattle Processing Cattle on Foot Peanut Stocks and Processing Soybean and Quinoa	23 Chickens and Eggs Crop Program	24	25 Poultry Slaughter Agricultural Chemical Usage Peanut Broiler Hatchery	26	27 Peanut Prices	
	30	31 Agricultural Prices Egg Products				30 Peanut Stocks and Processing Crop Program	31 Agricultural Prices Egg Products				
February			1 Broiler Hatchery Dairy Products	2	3 Dairy Products Prices Peanut Prices			1 Broiler Hatchery Dairy Products	2 Farm Production Expenditures	3 Cattle Stocks Land Values Peanut Prices	August
	6	7	8 Broiler Hatchery	9 Cotton Ginnings Crop Production	10 Dairy Products Prices Peanut Prices	6 Crop Program	7	8 Broiler Hatchery	9	10 Cotton Ginnings Crop Production Peanut Prices	
	13	14	15 Broiler Hatchery Peanut Stocks Turkey Hatchery	16 Crop Values	17 Dairy Products Prices Peanut Prices Livestock Operations Milk Production Peanut Prices	13 Crop Program	14 Cattle Stocks	15 Broiler Hatchery Turkey Hatchery	16	17 Cattle on Foot Milk Production Peanut Prices	
	20 HOLIDAY	21 U.S. and Canadian Eggs U.S. and Canadian Cattle and Sheep Cattle Processing Cattle on Foot Cattle on Feed	22 Broiler Hatchery Cold Storage Cold Storage - Ann	23	24 Dairy Products Prices Livestock Slaughter Poultry Slaughter Broiler Hatchery - Ann Cattle on Foot Peanut Prices Peanut Production	20 Cattle Processing Cattle on Foot Cattle on Feed Crop Program	21 U.S. and Canadian Eggs U.S. and Canadian Cattle and Sheep Cattle Processing Cattle on Foot Cattle on Feed	22 Broiler Hatchery Cold Storage	23	24 Livestock Slaughter Poultry Slaughter Peanut Prices	
	27	28 Chickens and Eggs - Ann Peanut Stocks and Processing	29 Agricultural Prices Broiler Hatchery Chickens and Eggs Egg Products			27 Rice Stocks Crop Program	28	29 Broiler Hatchery	30 Peanut Stocks and Processing	31 Agricultural Prices Egg Products Peanut Prices	
March					3 Dairy Products Prices Dairy Products Peanut Prices	3 HOLIDAY	4 Dairy Products Crop Program	5 Broiler Hatchery	6 Vegetables	7 Cattle Stocks - Counts Peanut Prices	September
	5	6	7 Broiler Hatchery	8	9 Crop Production Dairy Products Prices Peanut Prices	10 Crop Program	11	12 Cotton Ginnings Crop Production Broiler Hatchery	13	14 Peanut Prices Turkey Hatchery	
	12 Price Reactions after USDA Crop Reports	13	14 Broiler Hatchery	15 Nonlinear Traits and Non- Ann. Turkey Hatchery	16 Dairy Products Prices Peanut Prices	12 Crop Program	13 Livestock Historical Trunk Records	14 Broiler Hatchery Milk Production	15 Cattle Processing Cattle on Foot Cattle on Feed Crop Stocks Peanut Prices	16 Livestock Slaughter Cattle on Foot Chickens and Eggs Cold Storage Peanut Prices	
	19 Milk Production	20 Cattle Processing Cattle on Foot Cattle on Feed	21 Broiler Hatchery	22 Chickens and Eggs Cold Storage Hog Stocks	23 Cotton Ginnings Dairy Products Prices Livestock Slaughter Cattle on Foot Peanut Prices	19 Cotton Ginnings Dairy Slaughter Crop Program	20	21 Broiler Hatchery	22 Agricultural Prices Peanut Stocks and Processing	23 Crop Stocks Seed Stocks Egg Products Peanut Prices Quarterly Hog and Pig Cattle Stocks	
	26 Poultry Slaughter Price Reactions After USDA Livestock Reports	27	28 Broiler Hatchery	29 Agricultural Prices Peanut Stocks and Processing	30 Dairy Products Prices Grain Stocks Prospective Planting Rice Stocks Livestock Peanut Prices Quarterly Hog and Pig						



Ongoing Agricultural Statistics Program

Crops:

grains
hay
oilseeds
cotton
tobacco
potatoes
sugar
other field crops
citrus fruit
non-citrus fruit
nuts
vegetables
floriculture

crop progress
acreage
- prospective plantings
- planted
- harvested
yield & production
- forecasts
- final
- by utilization
stocks
disposition
processing
prices received by farmers
agricultural chemical use

Livestock:

cattle
hogs
sheep
goats
equine
poultry
milk & dairy products
aquaculture
bees & honey
mink

inventory
- total
- by class
- births
- deaths
- predator losses
marketings
slaughter
production/disposition
- meat
- other products
(milk, dairy products, wool, mohair, eggs, honey, etc.)
prices received by farmers
inventory/production values

Other:

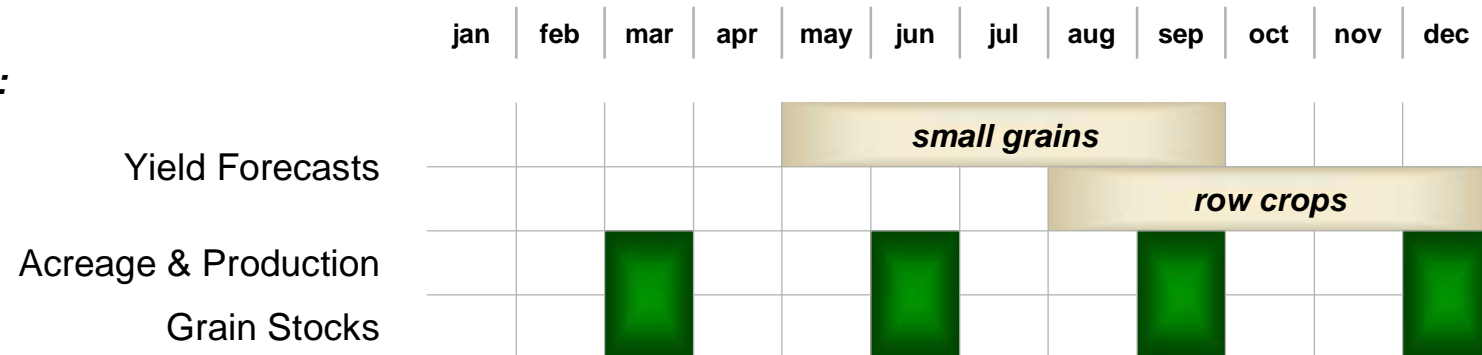
number of farms
land in farms
land values
cash rents
agricultural labor
- number of workers
- hours worked
- wages paid
cold storage
- holdings
- capacity
cash receipts
production expenditures

weekly ~ monthly ~ quarterly ~ annual

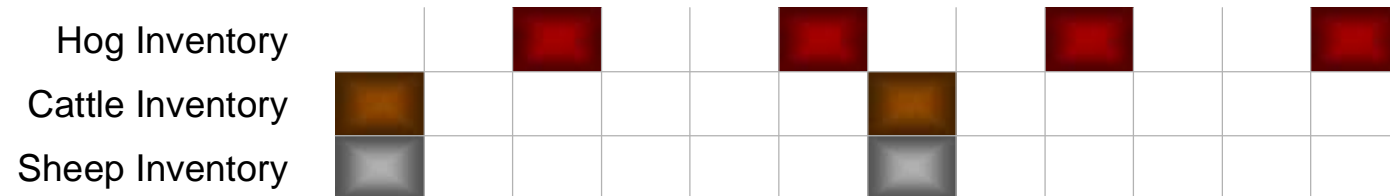


Survey Program for Major Data Series

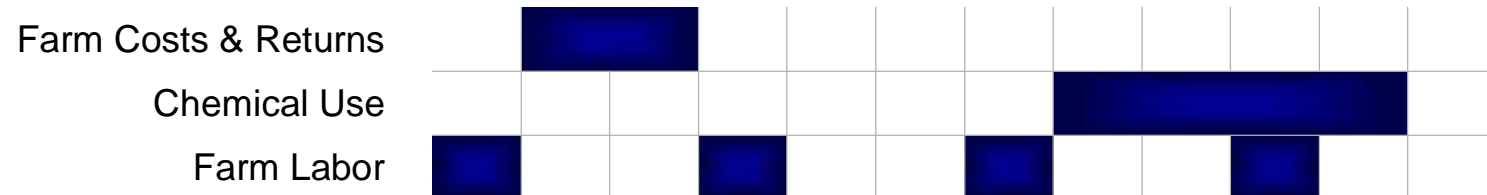
Crops:



Livestock:



Economic & Environmental:





Data Collection & Estimation Process

estimates based on data from
agricultural producers & agri-businesses

surveys
administrative sources

sample & census procedures

scientifically proven sampling techniques

lists of producers & businesses
segments of land



Data Collection & Estimation Process

data collected using:

- mail questionnaires
- telephone interviews
- face-to-face interviews
- objective measurements
- Electronic Data Collection

comprehensive data analysis



Data Collection & Estimation Process

Headquarters

- design survey
- develop specifications (content & procedures)
- design questionnaires
- develop instructions
- train field office statisticians
- develop systems/programs

Field Offices

- maintain lists
- train interviewers
- collect data
- process data
- analyze data
- recommend state estimates



Data Collection & Estimation Process

Headquarters

- combine data to national level
- analyze data
- receive state recommendations

Agricultural Statistics Board

- set regional & national estimates
- review/reconcile state recommendations
- publish final estimates



Agricultural Statistics Board

varies by commodity

ASB Director - *Chairperson*

Statistics Division Director

Branch Chief Crops - Livestock - Environmental, Economic & Demographic

Section Head Field Crops - Fruits, Vegetables & Special Crops - Livestock
Poultry & Specialty Commodities - Economics - Environment - Demographics

Commodity Specialist

Statistical Methodology Specialist

Survey Specialist

2 Field Office representatives



Statistics prepared under “lock-up” conditions

Speculative ***Commodities***

Corn yield forecasts

Soybean yield forecasts

Cotton yield forecasts

Wheat yield forecasts

Citrus production



Dissemination of Official Agricultural Statistics

Internet

www.nass.usda.gov

reports, publications & on-line agricultural statistics database

printed publications

e-mail subscriptions

CD-ROM



[Home](#) |
 [About NASS](#) |
 [Newsroom](#) |
 [Publications](#) |
 [Data and Statistics](#) |
 [Census](#) |
 [Surveys](#) |
 [Help](#) |
 [Contact Us](#)

Search NASS

Google™ Custom Search
 All NASS

- Advanced Search
- Search Tips

Browse NASS by Subject

- ▶ Crops and Plants
- ▶ Demographics
- ▶ Economics and Prices
- ▶ Environmental
- ▶ Livestock and Animals
- ▶ Charts and Maps
- ▶ Research, Science, and Technology
- ▶ Education and Outreach

Statistics by State

Select a State

You are here: [Home](#) /

The National Agricultural Statistics Service provides timely, accurate, and useful statistics in service to U.S. agriculture.

Today's Reports from NASS

[More](#)

Sep 21, 2012

Livestock Slaughter

Released at 08:30 A.M. ET

[Text](#) | [PDF](#) | [CSV](#)

Cattle on Feed

Released at 3:00 P.M. ET

[Text](#) | [PDF](#) | [CSV](#)

Chickens and Eggs

Released at 3:00 P.M. ET

[Text](#) | [PDF](#) | [CSV](#)

Cold Storage

Released at 3:00 P.M. ET

[Text](#) | [PDF](#) | [CSV](#)

Peanut Prices

Released at 3:00 P.M. ET

[Text](#) | [PDF](#) | [CSV](#)

Headlines

USDA Announces Change in Release Time of Key Statistical Reports Beginning in January 2013

U.S. Growers Expect to Produce 13 Percent Less Corn than Last Year

I Want To...

- [Make sure I'm counted](#)
- [Respond to NASS surveys online](#)
- [Ask a specialist](#)
- [Request a special tabulation](#)
- [Submit Feedback on the Chemical Use program](#)
- [Find charts or maps or geospatial data](#)
- [Learn about career opportunities](#)
- [Read our statement of commitment to scientific integrity](#)
- [Get to know NASS statistics](#)

Find NASS Publications

- [Today's Reports](#)
- [Date](#)
- [Subject](#)
- [Keyword](#)
- [Release Day](#)
- [Title](#)
- [Browsing our Guide to Products and Services](#)

Follow NASS



Receive reports by Email
[National](#) | [State](#) | [News](#)



Home About NASS Newsroom Publications Data and Statistics Census Surveys Help Contact Us

Search NASS

Google™ Custom Search
All NASS

- Advanced Search
- Search Tips

Browse NASS by Subject

- Crops and Plants
- Demographics
- Economics and Prices
- Environmental
- Livestock and Animals
- Charts and Maps
- Research, Science, and Technology
- Education and Outreach

Statistics by State

Select a State

You are here: Home / Data and Statistics

Data and Statistics

Quick Stats

More 

Find and download agricultural statistics for every state and county in the United States.

County Level Information

While Quick Stats is the best source of county level data from NASS, acreage and yield maps of county crop estimates are available [here](#).

County data reference items

- County Data Release Schedule
- County and District Geographic Boundaries
- County and District Codes
- Commodity Codes
- Livestock County Estimates

Special Tabulations

Special Tabulations are publishable, resummarized data tables from the Census of Agriculture or NASS surveys. Requests for Special Tabulations are considered when the requested data are not published elsewhere.

More 

Spatial Data

I Want To...

- Query NASS Data from a Data Base
- Search for Data by Commodity
- Ask a specialist
- View Data in Charts and Maps
- Request a Blank Survey Form

About NASS Estimates

- Understanding Agricultural Statistics
- Data Quality Measures
- Request a Special Tabulation
- Dairy Products Mandatory Program
- Citation Request





[Home](#) [About NASS](#) [Newsroom](#) [Publications](#) [Data and Statistics](#) [Census](#) [Surveys](#) [Help](#) [Contact Us](#)

Also See

- [Recent Statistics](#)
- [Tutorials](#)
- [Help](#)
- [Feedback](#)

You are here: [Home](#) / [Quick Stats](#)

Quick Stats

Search Commodity Data by Keyword [\(Hint\)](#)

Quick Stats Lite (Beta)

Introducing our new, guided interface to the Quick Stats 2.0 database! It is designed to provide a more structured approach to help users get commonly requested statistics from our online database. Many users previously accessed this information in our Quick Stats 1.0 database, which will be retired later this summer.

We are making further improvements to Quick Stats Lite which will be rolled out periodically over the next few months. Planned changes are: more commodities and views, enhancements to the results section, and usability features to help you easily change your selections or link you to the Quick Stats 2.0 interface which offers additional functionality. We would like to hear back from you about your experiences with this new tool as well as any suggestions for further improvements. [Please click here to provide feedback.](#)

Quick Stats 2.0

Quick Stats 2.0 is the most comprehensive tool for accessing agricultural data published by NASS. It allows you to discover exactly the information you desire, whether it is based on commodity, location, or time period. You can then visualize the data on a map, manipulate and export the

Data By Subject

Obtain an agricultural statistics profile for a particular subject area or commodity. Data is currently available in the following areas:

- Crops and Plants
- Economics
- Livestock and Animals

Quick Stats

[Home](#) [Recent Statistics](#) [Feedback](#) [Tutorials](#) [Help](#)

Navigation History:

Select Commodity (one or more)

Keyword Search [Hints](#)

Status: **24,221,746 records.**

Select one or more items to filter records. There are currently 24,221,746 records available.

Program:

CENSUS
SURVEY

Sector:

ANIMALS & PRODUCTS
CROPS
DEMOGRAPHICS
ECONOMICS
ENVIRONMENTAL

Group:

ANIMAL TOTALS
AQUACULTURE
CROP TOTALS
DAIRY
ENERGY
EXPENSES
FARMS & LAND & ASSETS
FIELD CROPS
FRUIT & TREE NUTS

Commodity:

AG LAND
AG SERVICES
AG SERVICES & RENT
AGRI-TOURISM & RECREATIONAL SERVICES
ALMONDS
ALPACAS
AMARANTH
ANIMAL SECTOR
ANIMAL TOTALS

Select Location (one or more)

Geographic Level:

AGRICULTURAL DISTRICT
COUNTY
INTERNATIONAL
NATIONAL
REGION : MULTI-STATE
REGION : SUB-STATE
STATE
ZIP CODE

Select Time (one or more)



Users of Official Agricultural Statistics

farmers

- individual & corporate farmers
- growers' associations
- farmer cooperatives

agribusinesses

- seed companies
- equipment companies
- chemical companies
- warehouse & storage companies
- transportation companies
- food processors
- feed processors
- other suppliers & buyers

economic firms

- banks & lending institutions
- commodity traders
- insurance companies
- marketing firms

university researchers

government policy makers

media

- newspapers
- magazines
- radio
- television